

UNIVERSITY OF HARTFORD

Registering a Game Console or Streaming Player on WiFi

Many devices, such as game consoles (Playstation, Xbox, Wii) and video streaming players (Apple TV, Roku, Blu-ray players, Smart TVs) are not designed to work in an enterprise-class, high density, authenticated WiFi environment such as that in a University.

Generally, such devices are best connected to the University network via a **wired** connection for best gameplay and best video streaming performance. **Information Technology Services recommends that you connect such devices to the wired network via an Ethernet cable.** However, they *can* be connected to the University's WiFi network by "registering" them to use a lower-security (less powerful encryption) that the device can support, and by "storing" your network credentials for the device in the WiFi system. Registration is accomplished by entering a unique "fingerprint" (called a "Media Control Access" or "MAC" address) on your device into the WiFi system and associating it with your University network account. Every networkable device has a unique MAC address.

The steps below describe how to register your device to the University's WiFi network.

Notes:

- Device registration should only be used for devices that cannot log onto the network "normally" (like a computer, tablet, or smartphone). Computers, tablets, and smartphones should be connected to the more secure **hawknet** network as described [here](#) in order to better protect your privacy.
- You can register up to 5 devices on the network.
- Devices can be registered at any time during the year.
- Device registration will expire at midnight on June 30th. You will need to re-register your device(s) after midnight of June 30th of the year – that is, if you return to campus in the fall, you'll need to re-register your device(s).

Registering a Device:

Access the University of Hartford Wireless Device Registration Website at <https://hawknet-auth.hartford.edu/guest>.

Enter your University of Hartford email name (without the "@hartford.edu" part) as the username and your email password and click the **Log In** button:

ARUBA networks ClearPass Guest

العربية Dansk Deutsch English Español Français 日本語 한국어

Operator Login

* Username:

* Password:

Log In

* required field


Click **Create Device** on the left-hand side:

ARUBA networks ClearPass Guest

Guest

- Start Here
- Create Device
- List Devices

Unified Visitor Management

 **ClearPass Guest**
Manage guest user accounts.

Change Language

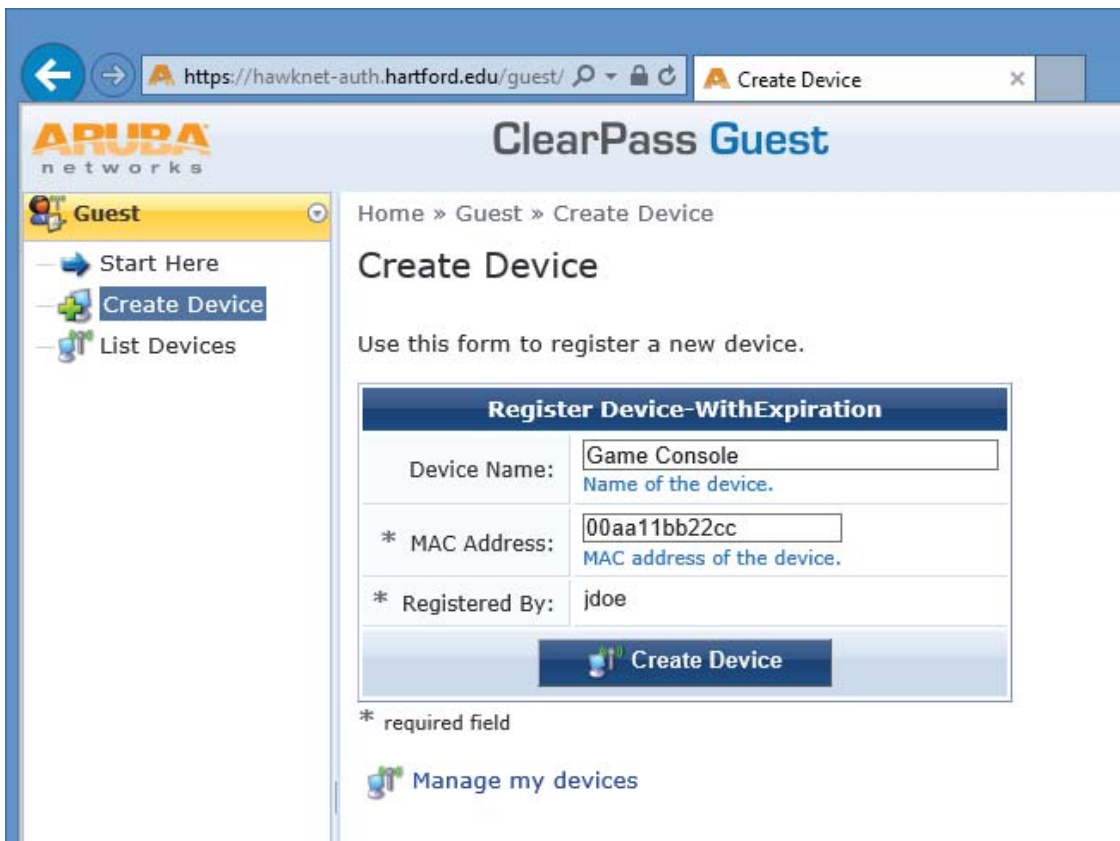
Logout

Fill out the form by:

- entering a name for your device
- entering its MAC address (See the table at the end of this webpage for help finding out your device's MAC address.)

Then click the **Create Device** button.

Note: MAC address can be in the form of 11-22-33-aa-bb-cc, 11:22:33:aa:bb:cc, or 112233aabbcc. If you need assistance locating your device's wireless MAC address, click [here](#).



Click **Logout** in the upper right corner of the browser window and then close your web browser.

Connect your device to the UHDEVICES:

SSID: uhdevices (must be typed in all lowercase letters!)
 Password: Hartfordhawks

This table provides hints about how to find your device's unique MAC address:

Determining your device's wireless MAC address

Device	Instructions
Apple TV	<ul style="list-style-type: none"> • Click Settings (gear icon) • Click General • Click About • Your Apple TV's wireless MAC address will be displayed
Nintendo 3DS	<ul style="list-style-type: none"> • Press the Settings icon (wrench) • Press the Internet Settings icon • Press the Nintendo DS Connections button • Press OK if prompted • Press the Options button

- Press the **System Information** button
 - Your 3DS's wireless MAC address will be displayed
-

Nintendo Wii
U

- Click the **System Settings** button on the Wii home screen
 - Click the **Internet** settings button
 - Select the **View MAC Address** option
 - Your Wii U's wireless MAC address will be displayed
-

Playstation 3

- Power on the PS3 with no disc in the drive
 - Navigate to **Settings**
 - Select **Network Settings**
 - Select **Settings and Connection Status List**
 - Your PS3's wireless MAC address will be displayed
-

Playstation 4

- Power on the PS4 with no disc in the drive
 - Navigate to **Settings**
 - Select **System**
 - Select **System Information**
 - Your PS4's wireless MAC address will be displayed
-

The Roku has a sticker on the back of the device that lists the wireless MAC address

Roku

- Select **Settings** from the Roku Home Screen
 - Select **Player Info** or **About** depending on the software revision
 - Your Roku's wireless MAC address will be displayed
-

Xbox 360

- Press the "Guide" button (silver Xbox logo) on your controller
- Navigate to **Settings**
- Select **System Settings**
- Select **Network Settings**
- Select **Configure Network**
- Navigate to **Additional Settings** tab
- Select **Advanced Settings**
- Select **Wireless Information**
- Your Xbox 360's wireless MAC address will be displayed

-
- Open the **My games & apps** application (*if you aren't signed into a profile, you can skip this step*)
- Xbox One
- Navigate to **Settings**
 - Select **Network**
 - Navigate to **Advanced settings**
 - Your Xbox One's wireless MAC address will be displayed
-

Any device not listed here - smart TVs, smart DVD/Blu-ray players, other set-top boxes, other game systems, etc.

Other

- Consult your vendor's website or documentation to assist in locating the Wireless or Wi-Fi MAC Address.
-

University of Hartford Information Technology Services
ITS@hartford.edu
860.768.5999