

UNIVERSITY OF HARTFORD

FACT BOOK
2015-2016
ANNUAL EDITION

June 2016

Institutions have a wide variety of data and information needs. The Fact Book is intended as a general source of information about the University, which reflects data from comparable points in time, over time. The data can inform decision makers by delineating trends as well as providing context and perspective.

The Fall edition of the Fact Book is a condensed version of the full Fact Book which is published in the spring.

Historical Fact Books are available for download on our website, although they may not be accurate or consistent with current definitions and reporting practices. The University is a dynamic entity, and changes occur frequently. The figures found here may differ from those found elsewhere due to population definitions and timing of data collection. As frequently as possible definitions and notes are attached to charts to ensure that context is provided.

If there is additional information you would like to see included, please contact the Office of Institutional Effectiveness and we will make every effort to incorporate it in future editions. If you are part of a University of Hartford office looking for institutional data to support a specific business process or question that cannot be answered using the data in the Fact Book, please contact us.

Table of Contents

University of Hartford: At a Glance	5
Office of Institutional Effectiveness.....	6
Admissions	
Undergraduate Admissions	7
Entering Student Profile	8
Benchmarking.....	11
Graduate Admissions.....	13
Entering Student Profile	14
Financial Aid	
Overview	15
Enrollment	
Headcount	17
Credit Hour Comparison.....	20
Trends in Major/Program Enrollment	22
Diversity.....	27
Persistence	
Retention.....	29
Graduation Rate.....	30
Degree Conferral	31
Athlete Graduation Rate.....	32
Faculty	
Composition.....	33
Diversity.....	35
Finance	
Overview	36
Library	
Overview	37

Accreditation and Degrees

Overview ----- 38

Organizational Charts

Office of the President ----- 43

Senior Administration ----- 44

Academic Affairs ----- 45

Student Affairs ----- 46

Finance and Administration ----- 47

Institutional Advancement ----- 48

UNIVERSITY OF HARTFORD

At a Glance

Chartered: 1957

Mission: As a private university with a public purpose, we engage students in acquiring the knowledge, skills and values necessary to thrive in, and contribute to, a pluralistic, complex world.

Mailing Address: 200 Bloomfield Ave. West Hartford, CT 06118

Campus: The main campus crosses three town lines: West Hartford, Hartford and Bloomfield.

President: Walter Harrison

Level and Control: 4-year, Private not for Profit

Type: Independent, Nonsectarian, Coeducational

Housing: Residential campus

Degrees Offered: Less than one year certificate
Associate's degree
Bachelor's degree
Postbaccalaureate certificate
Master's degree
Post-master's certificate
Doctor's degree - research/scholarship
Doctor's degree - professional practice

College/Schools of the University: Barney School of Business
College of Arts and Sciences (A&S)
College of Education, Nursing and Health Professions (ENHP)
Hartford Art School (HAS)
The Hartt School
Hillyer College
College of Engineering, Technology, and Architecture

Athletics: Division I

Conference: America East

Mascot: Howie the Hawk

History in Brief: Visit our website to read [a brief overview of the University's founding and growth over the past 57 years](#)

Or take a moment to watch a [visual timeline](#).

OFFICE OF INSTITUTIONAL EFFECTIVENESS

Mission

The primary mission of the Office of Institutional Effectiveness is to support the individuals and groups who make policies and decisions affecting the University of Hartford by supplying data and information, conducting policy analysis for coordinating campus assessment/evaluation activities, and facilitating planning efforts.

Goals of OIE

Coordination and analysis of university data for internal use to support the assessment of operations and outcomes.

Providing data and analysis for background and outcomes assessment in support of University and programmatic accreditation.

To assist the administrative and academic leadership with formative, summative, and descriptive evidence of institutional effectiveness, accountability or need.

Compiling and reporting official university data to the U.S. Department of Education, the Connecticut Office of Higher Education, and other state and federal reporting agencies as needed.

Compiling and reporting official university data for nationally recognized surveys such as those through the National Science Foundation, College Board, Peterson's, U.S. News and World Report, among others.

Serving as an educational resource for the University of Hartford community.

Meet our Staff

Nichole Petersen

Executive Director OIE
npetersen@hartford.edu
860-768-5365
CC312

Stacy Sperrazza

Research Analyst
sperrazza@hartford.edu
860-768-4227
CC229

Stefanie Cai

Senior Research Analyst
mcai@hartford.edu
860-768-4408
CC228

**UNIVERSITY
OF HARTFORD**



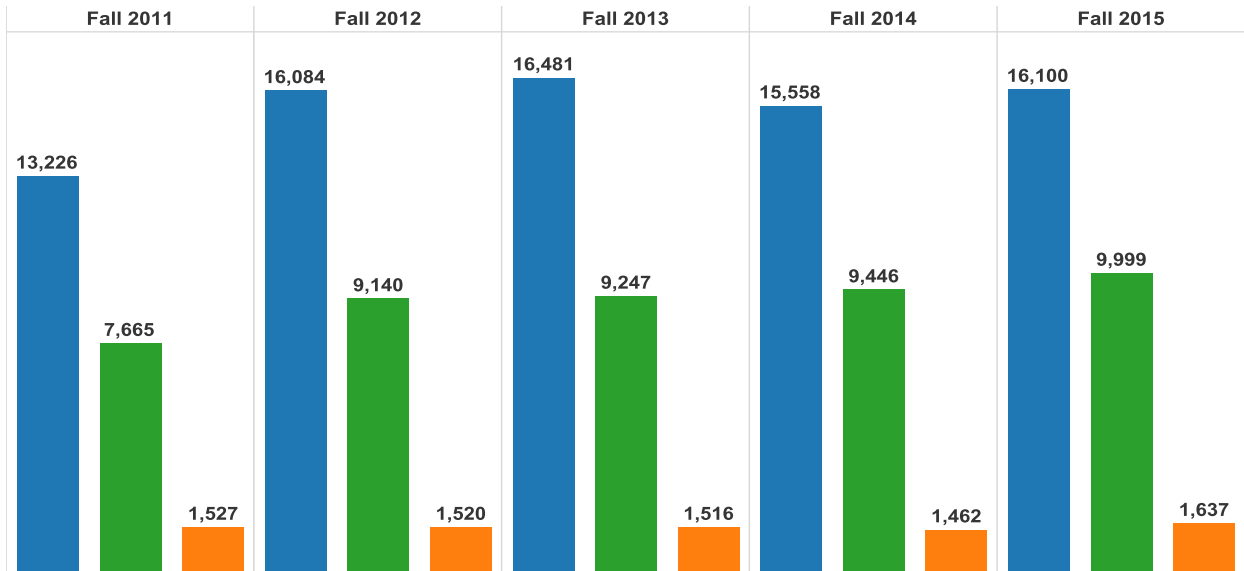
Institutional Research has been described as an attitude of commitment to the institution's purpose in society and to the value of critical appraisal and careful investigation.

—Joe L. Saupe Association for Institutional Research

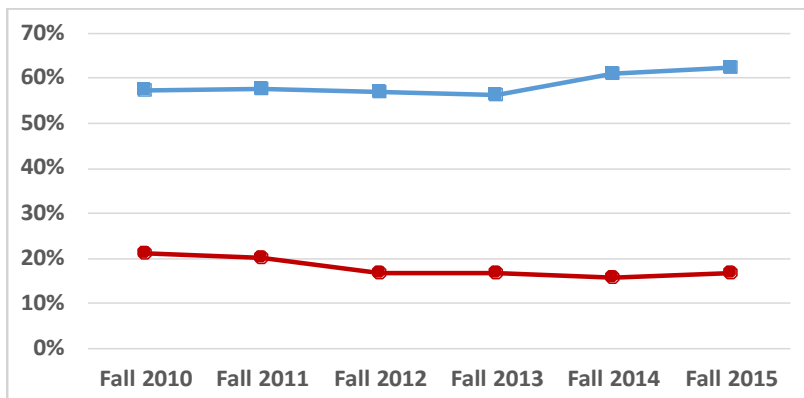
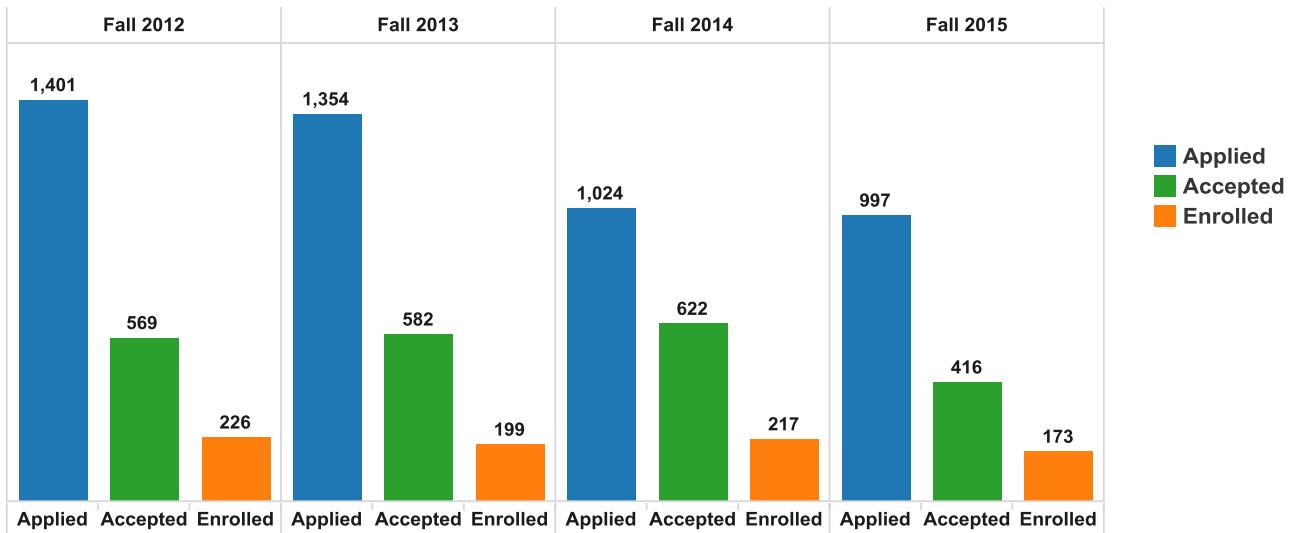
ADMISSIONS

Overview—Undergraduate

New Full Time Undergraduates



New Full-Time Transfers



Selectivity and Yield

Data note: Top bar chart shows all new full time students including freshmen, transfer, re-admits and fresh starts

ENTERING STUDENT PROFILE

New Full Time Freshmen

Freshmen Combined S.A.T

	2011	2012	2013	2014	2015
<i>National Average</i>	1,011	1,010	1,010	1,010	1,006
All Programs	1,015	1,017	1,016	1,005	1,012
Four Year Programs	1,061	1,065	1,054	1,046	1,042
HAS	1,038	1,039	1,026	991	1,007
A & S	1,049	1,054	1,024	1,033	1,023
Barney	1,059	1,043	1,053	1,030	1,031
ENHP	1,038	1,041	1,040	1,042	1,037
CETA	1,064	1,074	1,074	1,065	1,066
Hartt	1,117	1,096	1,132	1,097	1,093
University Studies	1,140	1,095	1,070	1,010	940
Hillyer	861	867	840	837	831

Freshmen Math (M) and Verbal (V) S.A.T.

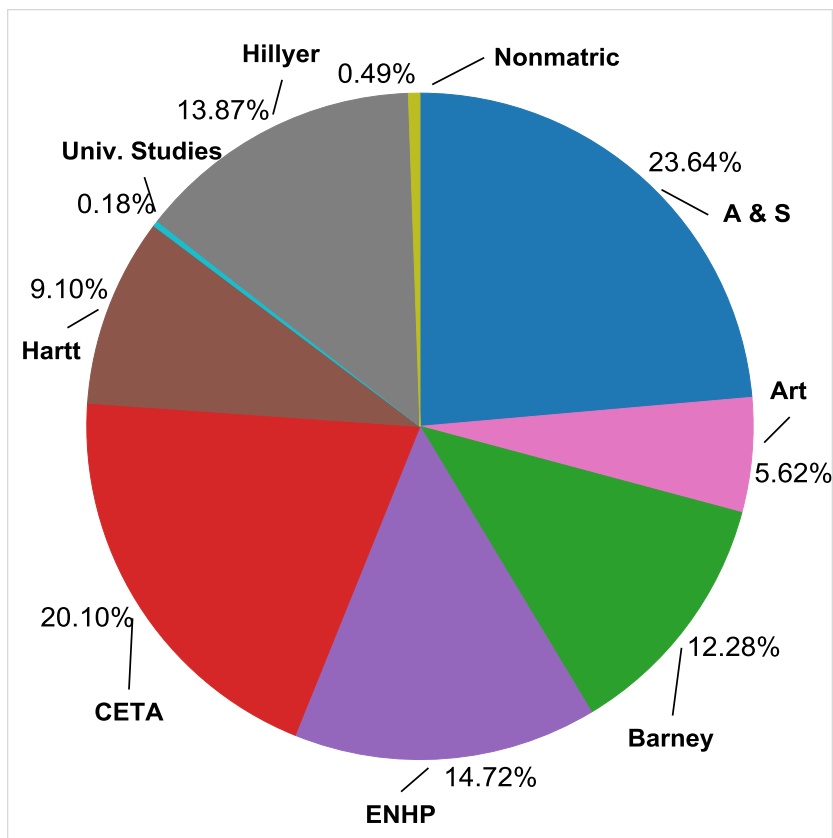
	2011		2012		2013		2014		2015	
	M	V	M	V	M	V	M	V	M	V
<i>National Average</i>	514	497	514	496	514	496	513	497	511	495
All Programs	511	504	511	506	511	505	504	501	508	504
Four Year Programs	536	525	531	534	530	524	525	520	524	518
HAS	509	529	510	540	501	525	481	510	494	514
A & S	521	528	526	528	508	516	510	523	512	511
Barney	548	511	530	513	536	517	522	508	521	511
ENHP	528	510	526	514	528	512	525	516	522	514
CETA	555	509	561	513	555	519	550	515	548	517
Hartt	550	567	539	557	558	574	546	550	533	560
University Studies	600	540	525	570	507	563	510	500	420	520
Hillyer	426	435	434	433	424	416	414	423	411	420

New Full Time Undergraduate Matriculants by College

	2010	2011	2012	2013	2014	2015
Hartford Art School	93	76	117	83	88	92
College of Arts & Sciences	406	357	382	405	361	387
Barney	150	160	135	162	141	201
Hillyer College	243	294	277	227	233	227
ENHP	241	210	188	185	218	241
CETA	240	240	254	286	267	329
The Hartt School	180	187	148	143	131	149
University Studies	13	2	5	8	4	3
Undecided	14	1	14	17	19	8
Total	1,580	1,527	1,520	1,516	1,462	1,637

Distribution of Fall 2015 New Full Time Undergraduate

Matriculants by College



Data note: Charts reflect Fall cohort of New Full Time Matriculants. Includes freshmen, transfer, readmits, freshstarts, degree seeking and non-degree seeking students.

Geographic Distribution of New First Time, Full Time Freshmen

Fall 2010 - Fall 2015

US Citizens Only						
Origin	2010	2011	2012	2013	2014	2015
Connecticut	462	460	462	484	486	571
New York	324	311	324	274	284	344
Massachusetts	218	199	218	147	145	153
New Jersey	139	166	139	138	106	152
Pennsylvania	38	32	38	27	24	32
New Hampshire	27	23	27	23	21	15
California	8	12	10	16	9	18
Maryland	18	13	18	14	12	10
Other New England States	31	28	23	40	38	41
Other States	58	80	58	62	45	63
Number of State Represented	34	36	33	35	36	31
International Students						
Origin	2010	2011	2012	2013	2014	2015
Saudi Arabia	2	6	13	5	7	12
Denmark	0	0	0	1	0	4
Australia	1	2	1	1	0	2
Canada	3	1	4	2	3	2
India	1	0	2	2	1	2
Japan	3	0	0	1	0	2
Kuwait	0	4	9	2	4	2
Mexico	0	0	1	1	1	2
United Arab Emirates	2	1	0	1	0	2
Brazil	0	0	2	1	0	1
China	3	1	5	2	4	1
Other Countries	10	10	17	20	15	8
Number of Countries Represented	14	13	22	25	20	19

Data note: represents first time full time freshmen. Excludes ELI, part time, new transfer students as well as readmits and fresh starts. Those international students with no country listed were excluded from totals.

ADMISSIONS

Benchmarking

Comparisons By SAT Overlap - Public/Private Institutions												
Private Institutions Name of Institution	State	Shared Prospective Applicants	Tuition, Fees, Room and Board		Percent Change	Full-time Undergraduate Enrollment			2014/15 SAT-ACT 25-75th Percentile	2014/15 Accept. Rate (Percent)		
			14-15	15-16		2012	2013	2014				
University of Hartford	CT	1453	46962	48098	2.4	46962	48098	4541	4545	4445	950 - 1130	72.1%
Quinnipiac University	CT	982	51160	57090	3.5	51160	57090	6231	6307	6335	1010 - 1210	65.9
University of New Haven	CT	592	49040	50370	2.7	49040	50370	4267	4407	4673	930 - 1160	80.9
Hofstra University	NY	592	51810	53990	4.2	51810	53990	6374	6378	6430	1030 - 1230	61.6
Syracuse University	NY	548	56346	58198	3.3	56346	58198	14169	14422	14229	1070 - 1280	53.2
Ithaca College	NY	520	53864	55332	2.7	53864	55332	6159	6131	6003	1100 - 1300	59.1
Boston University	MA	517	60694	62956	3.7	60694	62956	16634	16593	16083	1190 - 1410	34.5
Pace University	NY	516	53367	56335	5.6	53367	56335	7107	7116	7219	930 - 1150	85.0
Northeastern University	MA	513	58010	60530	4.3	58010	60530	13107	13204	13492	1340 - 1500	32.2
Fordham University	NY	498	61203	61588	0.6	61203	61588	7710	7694	8034	1150 - 1350	48.1
Sacred Heart University	CT	455	49264	51312	4.2	49264	51312	3399	3773	4229	955 - 1229	57.1
New York University	NY	445	62952	65330	3.8	62952	65330	21247	21365	23450	1240 - 1450	35.5
Iona College	NY	399	47600	49304	3.6	47600	49304	2927	3110	2993	920 - 1110	86.7
Drexel University	PA	397	61418	63158	2.8	61418	63158	13072	13977	11958	1090 - 1300	76.0
Rider University	NJ	391	50160	52130	3.9	50160	52130	3928	3792	3772	930 - 1120	70.9
Western New England University	MA	389	46154	46924	1.7	46154	46924	2520	2498	2576	970 - 1170	80.2
Roger Williams University	RI	389	46296	46646	0.8	46296	46646	3774	3875	4023	1030 - 1200	77.9
Public Institutions												
University of Hartford	CT	1929	46962	48098	2.4	46962	48098	4541	4545	4445	950 - 1130	72.1%
University of Connecticut	CT	1244	44954	47082	4.7	24774	25538	16736	17219	17524	1150 - 1350	50.0
Central Ct. State University	CT	1027	30035	31544	5.0	19749	20434	7771	7624	7679	920 - 1110	60.4
University of Rhode Island	RI	985	39568	40808	3.1	24002	24818	11945	11829	12025	1010 - 1200	75.7
Univ. of Massachusetts-Amherst	MA	803	40270	42717	6.1	24715	26384	20306	20505	20551	1120 - 1310	61.3
Southern Ct. State University	CT	571	32226	32324	0.3	20490	21214	7289	7016	6802	830 - 1030	71.5
SUNY - Stony Brook	NY	570	33388	35967	7.7	19968	20887	14689	14892	15143	1150 - 1350	41.3
University at Albany - SUNY	NY	568	32153	34538	7.4	28694	21418	12068	12055	12095	1010 - 1180	55.8
Eastern Ct. State University	CT	534	31456	33234	5.7	21170	22124	4420	4395	4287	920 - 1120	63.1
Rutgers-New Brunswick	NJ	534	40340	41575	3.1	25562	26185	30038	31759	32272	1090 - 1340	60.5
Univ. of New Hampshire-Durham	NH	510	39892	40876	2.5	26912	27606	12335	12060	12304	1000 - 1200	80.0
Pennsylvania State Univ.-Univ. Park	PA	506	40972	42266	3.2	28022	28434	37917	38826	39077	1090 - 1290	50.3
Western Connecticut State Univ.	CT	463	33180	33524	1.0	20388	21234	4501	4394	4362	890 - 1090	57.3
University of Vermont	VT	443	48654	50310	3.4	27006	27918	9956	9764	9601	1080 - 1290	73.4
State Univ. of NY Binghamton	NY	442	33287	35362	6.2	21647	22242	11904	12559	12906	1210 - 1370	44.1
University of Massachusetts-Lowell	MA	441	38678	40795	5.5	23725	25097	8724	9034	9297	1050 - 1240	62.0
Temple University	PA	428	33728	35860	6.3	23702	25834	24382	24743	24787	1010 - 1230	61.7
University of Delaware	DE	406	41432	42560	2.7	23312	24210	15899	16037	16694	1100 - 1300	65.9
SUNY - Buffalo	NY	406	32566	35051	7.6	20626	21631	17903	18091	17990	1050 - 1250	57.8

Data from U.S. News & World Report, current edition, "America's Best Colleges"; IPEDS Submissions; "College Board" and Institutional websites.

University of Hartford Accepted Freshmen Attending Competitor Institutions

	Accepted UofH, Enrolled		Tuition, Fees, Room & Board Current		Percent Change	Tuition, Fees, Room & Board Prior		FT Undergraduate Fall Enrollment			2014/15 SAT-ACT	2014/15 Accept. Rate
	State	Elswhere	14-15	15-16		12-13	13-14	2012	2013	2014	Percentile	(Percent)
Private Institutions												
University of Hartford	CT	-	46962	48098	2.4	44276	45606	4541	4545	4445	880 - 1110	72.1
1 Quinnipiac University	CT	138	55160	57090	3.5	51800	53580	6231	6307	6335	1010 - 1210	65.9
2 Sacred Heart University	CT	129	49264	51312	4.2	47135	48564	3399	3773	4229	955 - 1229	57.1
3 University of New Haven	CT	126	49040	50370	2.7	46350	47640	4267	4407	4673	950 - 1160	80.9
4 Hofstra University	NY	83	51810	53990	4.2	47545	50200	6374	6378	6430	1050 - 1230	61.6
5 Ithaca College	NY	76	53864	55332	2.7	51510	52300	6159	6131	6003	1100 - 1300	59.1
6 Roger Williams University	RI	70	46296	46646	0.8	45308	45788	3774	3875	4023	1030 - 1200	77.9
7 St. Johns University	NY	67	55070	55070	0.0	50790	53140	10956	10908	10558	990 - 1210	62.5
8 Syracuse University	NY	63	56346	58198	3.3	52696	54512	14169	14422	14229	1070 - 1280	53.2
9 Western New England University	MA	62	46154	46924	1.7	44056	45590	2520	2498	2576	970 - 1170	80.2
10 University of Bridgeport	CT	51	43390	43840	1.0	40190	42940	1852	2035	2254	820 - 980	60.7
11 Johnson & Wales	RI	50	40143	40802	1.6	35373	39661	8857	8754	8246	N/A - N/A	81.2
12 Wentworth Institute of Technology	MA	49	42160	44150	4.7	39370	40250	3592	3634	3868	1010 - 1220	82.6
13 University of St. Joseph	CT	47	49181	51020	3.7	45424	47483	809	831	761	870 - 1060	80.0
14 Rochester Institute of Technology	NY	45	47336	49042	3.6	44058	45602	12393	12106	12191	1110 - 1320	57.5
15 Pace University	NY	44	53367	56335	5.6	48094	51289	7107	7116	7219	950 - 1150	85.0
16 Drexel University	PA	41	61418	63158	2.8	50265	56725	10711	11480	11958	1090 - 1300	76.0
17 Rider University	NJ	39	50160	52130	3.9	45760	48170	3935	3928	3772	930 - 1120	70.9
18 Iona College	NY	38	47600	49304	3.6	43978	45945	2927	3110	2993	920 - 1110	86.7
19 Mount St. Vincent	NY	35	42540	42970	0.0	40820	42350	1394	1489	1517	840 - 1010	87.5
20 Fairfield University	CT	33	56960	58395	2.5	54240	55850	3471	3546	3685	1090 - 1260	71.5
21 Springfield College	MA	32	44665	45995	3.0	40210	41310	2208	2142	2108	910 - 1170	70.9
22 Manhattan College	NY	31	50928	51750	1.6	44825	49560	3141	3195	3276	990 - 1190	66.5
23 Boston College	MA	31	60622	62820	3.6	56486	58506	9110	9049	9154	1270 - 1460	33.9
24 University of Tampa	FL	29	35954	36944	2.8	33798	35160	5799	6188	6544	990 - 1160	51.9
25 College of St. Rose	NY	29	40548	41704	2.9	37492	38934	2721	2664	2507	940 - 1150	76.3

Institutions from National Student Clearinghouse; All other data from U.S. News, current edition, "America's Best Colleges"; IPEDS data; Institutional websites.

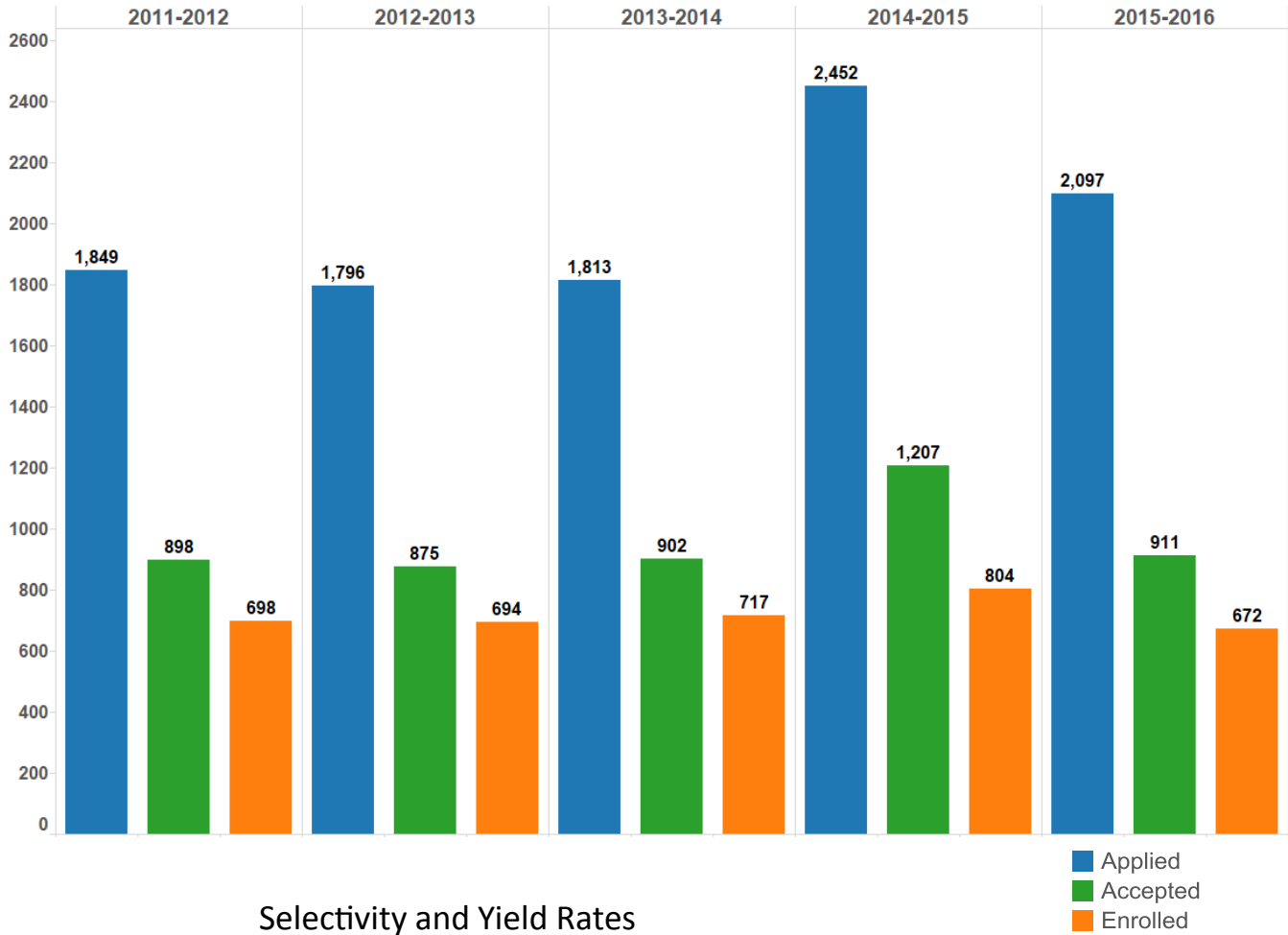
	Accepted UofH, Enrolled		Tuition, Fees, Room & Board Out of State		Percent Change	Tuition, Fees, Room & Board In State		FT Undergraduate Fall Enrollment			2014/15 SAT-ACT	2014/15 Accept. Rate
	State	Elswhere	14-15	15-16		14-15	15-16	2012	2013	2014	Percentile	(Percent)
Public Institutions												
University of Hartford	CT	-	46962	48098	2.4	46962	48098	4541	4545	4445	880 - 1110	72.1%
1 University of Connecticut	CT	327	44954	47082	4.7	24774	25538	16736	17219	17524	1150 - 1350	50.0
2 Central Ct. State University	CT	152	30035	31544	5.0	19749	20434	7771	7624	7679	920 - 1110	60.4
3 University of Rhode Island	RI	104	39568	40808	3.1	24002	24818	11945	11829	12025	1010 - 1200	75.7
5 Southern CT State University	CT	84	32226	32324	0.3	20490	21214	7289	7016	6802	830 - 1030	71.5
4 Univ. of Massachusetts-Amherst	MA	72	40270	42717	6.1	24715	26384	20306	20505	20551	1120 - 1310	61.3
6 University at Albany-SUNY	NY	68	32153	34538	7.4	20513	21418	12068	12055	12095	1010 - 1180	55.8
7 Eastern CT State University	CT	67	31456	33234	5.7	21170	22124	4420	4395	4287	920 - 1120	63.1
9 Pennsylvania State Univ.-Univ. Park	PA	57	40972	42266	3.2	28022	28434	37917	38826	39077	1090 - 1290	50.3
8 Univ. of New Hampshire-Durham	NH	50	39892	40876	2.5	26912	27606	12335	12060	12304	1000 - 1200	80.0
11 Univ. of Massachusetts-Dartmouth	MA	50	29432	37795	0.0	22750	24210	6580	6373	6299	920 - 1130	76.8
10 Western CT State University	CT	46	33180	33524	1.0	20388	21254	4501	4394	4362	890 - 1090	57.3
17 Keene State	NH	46	30152	31120	3.2	22232	22650	4657	4541	4552	870 - 1060	78.6
14 Montclair State University	NJ	46	35293	34202	-3.1	25756	25655	12380	13356	13755	880 - 1070	66.8
12 Univ. of Massachusetts-Lowell	MA	40	38678	40795	5.5	23725	25097	8724	9034	9297	1050 - 1240	62.0
16 University Of Delaware	DE	39	42250	42560	0.0	23900	24210	15558	15899	16694	1100 - 1300	65.9
18 Rowan of New Jersey	NJ	35	34592	32624	-5.7	26638	24510	8909	9254	10484	1010 - 1220	65.5
19 University at Buffalo-SUNY	NY	34	32566	35051	7.6	20626	21631	17903	18091	17990	1050 - 1250	57.8
13 Westfield State	MA	33	24243	25570	0.0	18163	19490	4712	4999	4867	910 - 1090	74.5
23 SUNY Stony Brook	NY	33	33388	35967	7.7	19968	20887	14715	14689	15143	1150 - 1350	41.3
24 Towson	MD	32	31204	32426	0.0	19526	20820	15590	15852	16503	1000 - 1170	59.2
15 Rutgers-New Brunswick	NJ	29	40340	41575	3.1	25562	26185	30038	31759	32272	1090 - 1340	60.5
25 Suny Oswego	NY	29	29481	30421	3.2	20191	20571	6815	6954	6832	1020 - 1190	48.4
21 SUNY Cortland	NY	28	29409	N/A	0.0	19759	N/A	6228	6281	6203	970 - 1130	49.0
20 Temple University	PA	27	35460	35860	1.1	25434	25834	24382	24743	24787	1010 - 1230	61.7
22 SUNY Oneonta	NY	26	28318	28700	1.3	18668	19050	5724	5688	5711	1000 - 1170	49.9

Institutions from National Student Clearinghouse; All other data from U.S. News & World Report, current edition, "America's Best Colleges"; IPEDS data; Institutional websites.

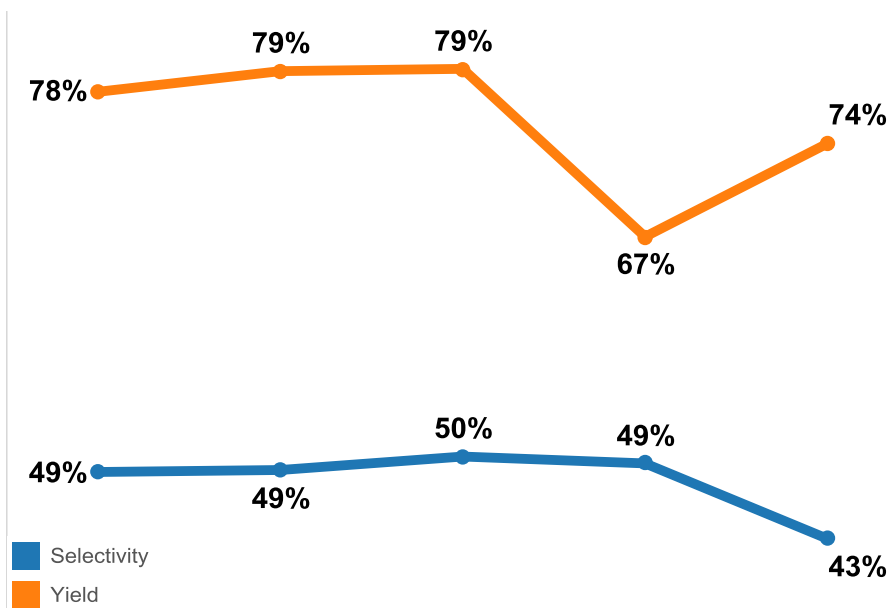
ADMISSIONS

Overview—Graduate

New Graduate Students



Selectivity and Yield Rates



Data note: Includes new graduate students who applied, were accepted, and enrolled into a graduate program for each academic year. The data may not match census data if applications, acceptances, or enrollments were processed after census closing date for the fall or spring semesters. Excludes non-degree students.

Academic Year = summer through spring.

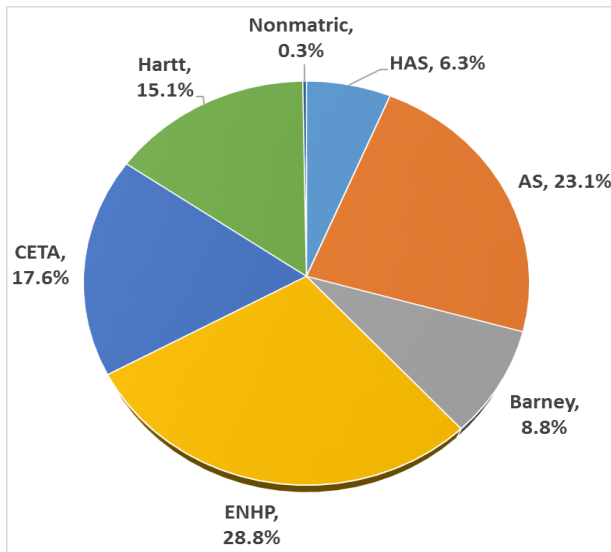
ENTERING STUDENT PROFILE

New Graduate Students

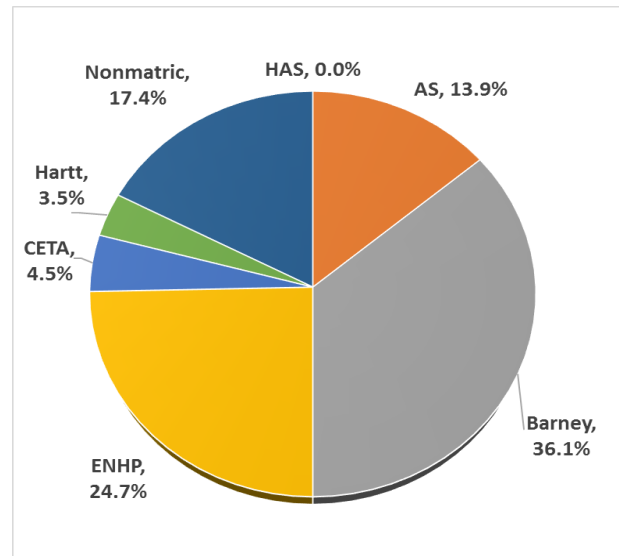
New Graduate Students—By College and Academic Year

College		AY13	AY14	AY15	AY16
Hartford Art School	FT	21	33	27	23
	PT	0	0	0	0
College of Arts & Sciences	FT	77	82	93	84
	PT	19	18	26	40
Barney School of Business	FT	46	55	42	32
	PT	121	153	155	104
ENHP	FT	78	81	82	105
	PT	84	68	73	71
CETA	FT	37	48	131	64
	PT	26	17	25	13
The Hartt School	FT	71	54	50	55
	PT	7	7	9	10
Nonmatric	FT	2	3	4	1
	PT	78	70	53	50
Total	FT	332	356	429	364
	PT	335	333	341	288

New Full Time Graduate Enrollment AY16



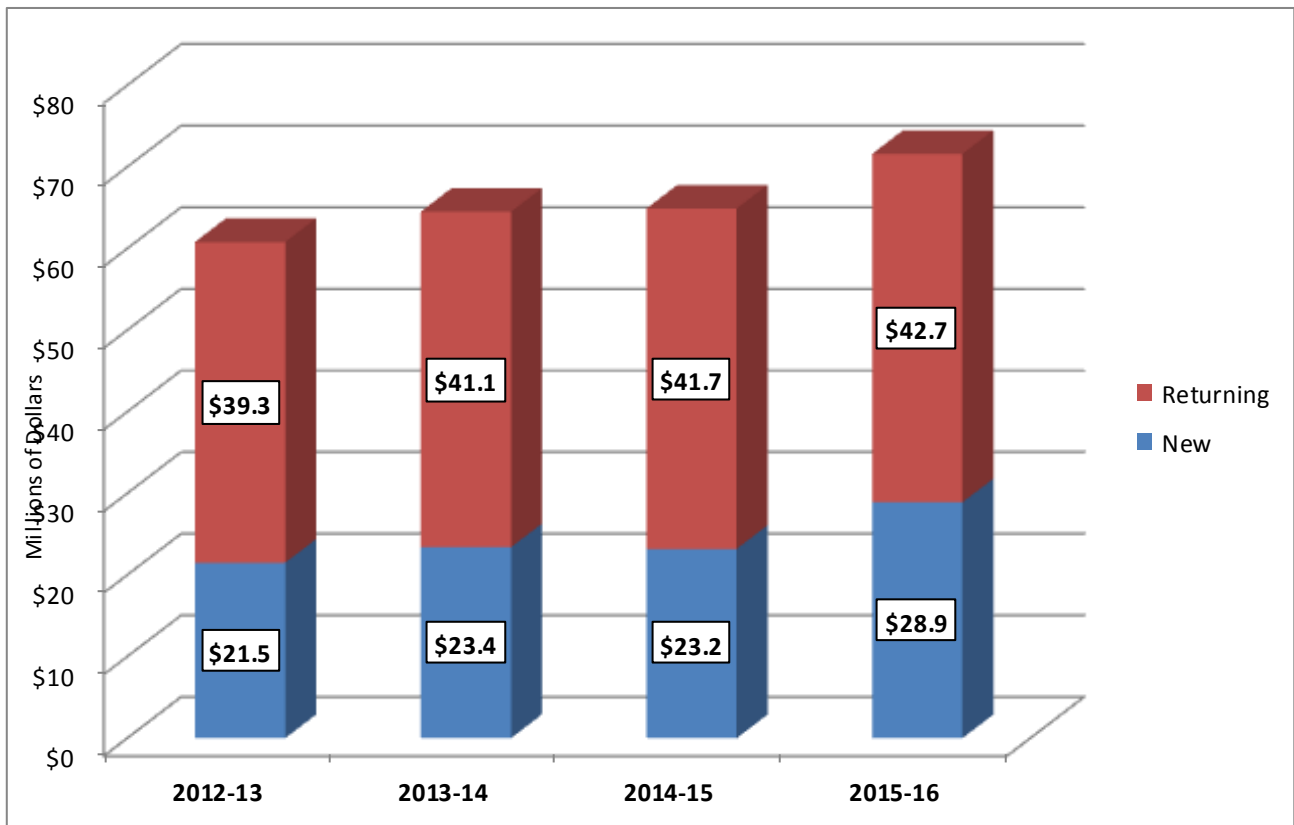
New Part Time Graduate Enrollment AY16



Data note: Data includes new graduate students for the fall and spring semesters only as of census date. Excludes ELI. Totals will vary from those on previous page due to deferrals and those starting after census date.

FINANCIAL AID

Undergraduate Institutional Financial Aid
2012-13 to 2015-16

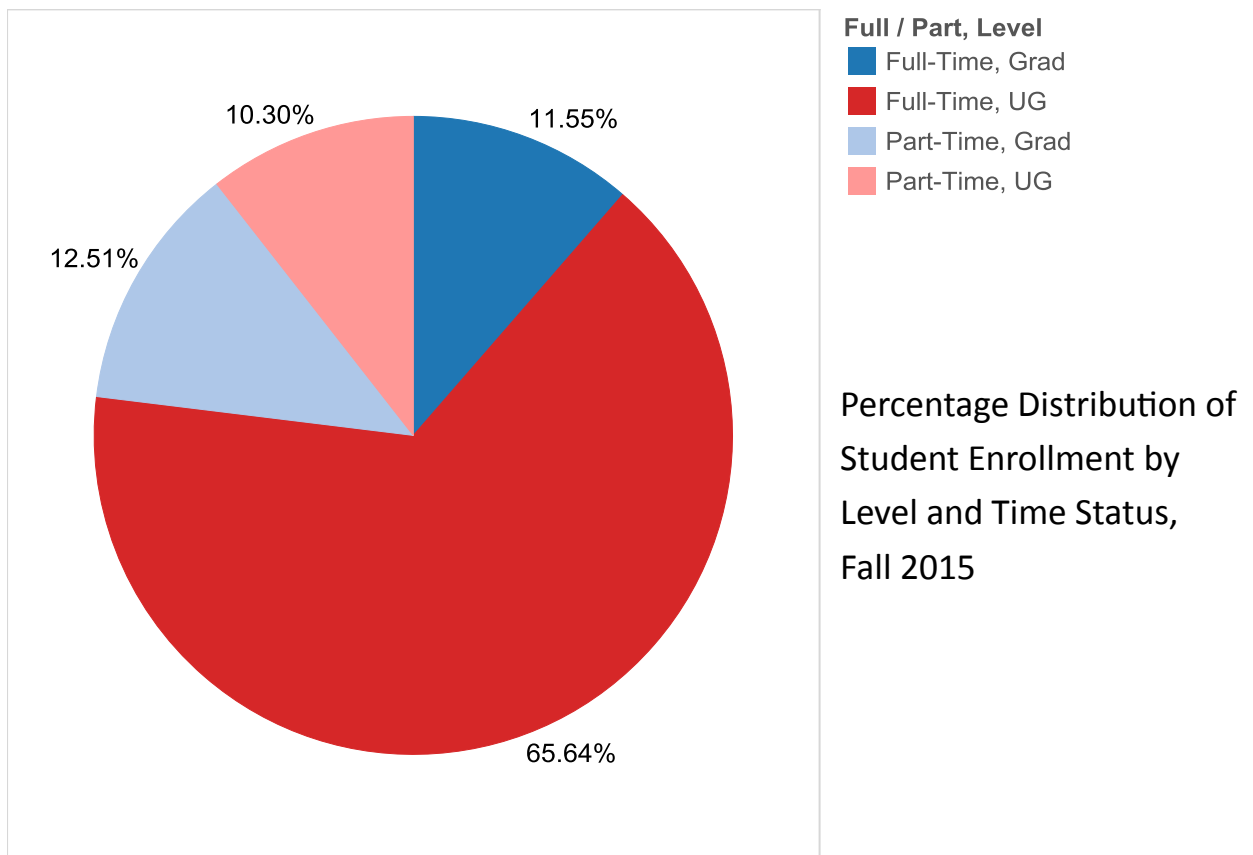


Institutional Financial Aid By Type and Family Income Level, Fall 2015						
Income Level (\$'s)	Type of Aid					
	Enrollment	Talent	Academic	Athletic	Other	Total
0 to 1000	\$ 2,594,659	\$ 555,500	\$ 485,200	\$ 225,658	\$ 1,015,894	\$ 4,876,911
10001 to 20000	\$ 1,638,180	\$ 236,562	\$ 323,900	\$ 26,476	\$ 574,659	\$ 2,799,777
20001 to 30000	\$ 1,655,055	\$ 305,118	\$ 499,700	\$ 140,029	\$ 708,543	\$ 3,308,445
30001 to 40000	\$ 1,865,708	\$ 295,972	\$ 443,900	\$ 50,666	\$ 769,641	\$ 3,425,887
40001 to 50000	\$ 1,810,415	\$ 433,402	\$ 573,800	\$ 82,031	\$ 974,940	\$ 3,874,588
50001 to 60000	\$ 1,747,175	\$ 353,000	\$ 553,790	\$ 35,076	\$ 990,399	\$ 3,679,440
60001 to 70000	\$ 1,333,493	\$ 300,050	\$ 731,280	\$ 170,094	\$ 692,250	\$ 3,227,167
70001 to 80000	\$ 1,540,010	\$ 285,598	\$ 542,340	\$ 128,953	\$ 966,585	\$ 3,463,486
80001 or more includes Unknown	\$17,978,611	\$ 5,650,112	\$ 9,381,570	\$ 4,652,085	\$ 5,258,801	\$42,921,179
Total	\$32,163,306	\$ 8,415,314	\$ 13,535,480	\$ 5,511,068	\$ 11,951,712	\$71,576,880

ENROLLMENT

Fall Headcount by Level and Time Status

Level	Full / Part	Fall 2010	Fall 2011	Fall 2012	Fall 2013	Fall 2014	Fall 2015
UG	Full-Time	4,694	4,596	4,541	4,545	4,492	4,559
	Part-Time	804	783	839	756	734	715
	Total	5,498	5,379	5,380	5,301	5,226	5,274
Grad	Full-Time	700	727	692	719	743	802
	Part-Time	982	948	920	915	897	869
	Total	1,682	1,675	1,612	1,634	1,640	1,671
Grand Total		7,180	7,054	6,992	6,935	6,866	6,945



Data note: All students enrolled in courses. Includes ELI, Non-degree, High School, and Consortium students

ENROLLMENT

Fall Headcount by College, Level, and Time Status

		College of Arts and Sciences						Hartford Art School					
		Fall 2010	Fall 2011	Fall 2012	Fall 2013	Fall 2014	Fall 2015	Fall 2010	Fall 2011	Fall 2012	Fall 2013	Fall 2014	Fall 2015
Full-Time	UG	1,246	1,205	1,166	1,176	1,142	1,162	332	279	300	305	307	295
	Grad	171	169	160	160	172	184	48	60	52	52	54	50
Part-Time	UG	88	87	83	74	68	73	24	33	27	21	19	20
	Grad	158	137	142	135	133	144					1	
Grand Total		1,663	1,598	1,551	1,545	1,515	1,563	404	372	379	378	381	365
		Barney School of Business						Hillyer College					
Full-Time	UG	586	561	525	521	507	565	469	470	449	415	401	398
	Grad	113	91	73	86	78	62						
Part-Time	UG	70	64	66	65	44	44	8	4	3	6	6	6
	Grad	369	341	352	353	394	365						
Grand Total		1,138	1,057	1,016	1,025	1,023	1,036	477	474	452	421	407	404
		College of Ed, Nursing, Health Prof						College of Eng, Tech and Arch					
Full-Time	UG	686	690	682	636	656	647	773	769	813	880	904	967
	Grad	181	194	208	235	218	239	56	60	58	64	119	164
Part-Time	UG	111	122	128	111	113	128	71	78	75	79	65	66
	Grad	267	268	230	235	207	187	88	105	90	91	92	92
Grand Total		1,245	1,274	1,248	1,217	1,194	1,201	988	1,012	1,036	1,114	1,180	1,289
		Hart School						Univ. Studies					
Full-Time	UG	543	570	566	561	528	496	39	35	22	23	18	18
	Grad	126	147	139	118	99	101						
Part-Time	UG	25	21	24	26	28	12	145	153	161	154	164	153
	Grad	35	37	36	36	30	30						
Grand Total		729	775	765	741	685	639	184	188	183	177	182	171

		Non-Degree						All Colleges Combined					
		Fall 2010	Fall 2011	Fall 2012	Fall 2013	Fall 2014	Fall 2015	Fall 2010	Fall 2011	Fall 2012	Fall 2013	Fall 2014	Fall 2015
Full-Time	UG	20	17	18	28	29	11	4,694	4,596	4,541	4,545	4,492	4,559
	Grad	5	6	2	4	3	2	700	727	692	719	743	802
Part-Time	UG	262	221	272	220	227	213	804	783	839	756	734	715
	Grad	65	60	70	65	40	51	982	948	920	915	897	869
Grand Total		352	304	362	317	299	277	7,180	7,054	6,992	6,935	6,866	6,945

Data note: College numbers include all degree seeking students . Non-degree includes all students in credit bearing courses but who are not matriculated into a degree program, which includes consortium, high school, and other non-degree students. ELI is included within colleges.

ENROLLMENT

Credit Hour Comparison

Credit Hours Consumed by Student by College

		Fall 2011	Fall 2012	Fall 2013	Fall 2014	Fall 2015
A & S	Undergraduate	18,759	18,113	18,176	17,741	17,999
	Graduate	2,294	2,186	2,155	2,290	2,478
	Total	21,053	20,298	20,331	20,031	20,476
Art	Undergraduate	4,360	4,649	4,500	4,670	4,273
	Graduate	258	224	217	219	223
	Total	4,618	4,873	4,717	4,889	4,496
Barney	Undergraduate	8,688	8,219	8,084	7,736	8,772
	Graduate	2,535	2,366	2,608	2,675	2,288
	Total	11,223	10,585	10,692	10,410	11,060
CETA	Undergraduate	12,628	13,348	14,279	14,701	15,804
	Graduate	1,035	987	1,134	1,677	2,154
	Total	13,663	14,335	15,413	16,378	17,958
ENHP	Undergraduate	11,322	11,279	10,272	10,600	10,670
	Graduate	3,630	3,593	3,959	3,794	3,892
	Total	14,952	14,872	14,231	14,394	14,562
Hartt	Undergraduate	9,758	9,757	9,750	9,132	8,459
	Graduate	1,614	1,609	1,348	1,178	1,097
	Total	11,371	11,366	11,097	10,310	9,556
Hillyer	Undergraduate	7,349	6,996	6,519	6,302	6,237
	Total	7,349	6,996	6,519	6,302	6,237
Non-Matric	Undergraduate	932	1,083	988	930	924
	Graduate	226	251	276	159	207
	Total	1,158	1,334	1,263	1,089	1,130
Univ. Studies	Undergraduate	1,333	1,164	1,193	1,150	1,135
	Total	1,333	1,164	1,193	1,150	1,135
Grand Total		86,718	85,820	85,455	84,951	86,609

This table shows the credits that were generated at the University. The data is organized by the College in which the student is enrolled in regardless of the College that produced the course. The student is the unit of analysis not the course. The grand total is different between consumed and generated because Consortium is excluded under generated.

Credit Hours Generated by College

		Fall 2012	Fall 2013	Fall 2014	Fall 2015
A & S	Undergraduate	31,516	30,524	30,050	31,173
	Graduate	2,263	2,248	2,406	2,630
	Total	33,779	32,772	32,456	33,803
Art	Undergraduate	3,229	4,048	4,151	3,620
	Graduate	245	253	243	223
	Total	3,474	4,301	4,394	3,843
Barney	Undergraduate	6,489	6,408	6,152	6,293
	Graduate	2,528	2,843	2,838	2,417
	Total	9,017	9,251	8,990	8,710
CETA	Undergraduate	8,115	8,464	9,203	9,770
	Graduate	899	1,040	1,488	2,142
	Total	9,014	9,504	10,691	11,912
ENHP	Undergraduate	4,026	3,595	3,516	3,898
	Graduate	4,134	4,469	4,182	4,308
	Total	8,160	8,064	7,698	8,206
Hartt	Undergraduate	7,491	7,401	7,012	6,678
	Graduate	1,667	1,397	1,225	1,118
	Total	9,157	8,798	8,237	7,796
Hillyer	Undergraduate	6,714	6,197	5,902	5,700
	Total	6,714	6,197	5,902	5,700
AUC	Undergraduate	5,885	6,008	6,056	6,140
	Total	5,885	6,008	6,056	6,140
Univ. Studies	Undergraduate	576	553	524	497
	Total	576	553	524	497
Grand Total		85,775	85,446	84,947	86,606

This table shows the credits that were generated at the University. The data is organized by the College in which the course resides regardless of the majors of the students sitting in each course. The course is the unit of analysis not the student. The grand total is different between consumed and generated because Consortium is excluded under generated.

ENROLLMENT

Trends in Major/Program Enrollment

Program	Full Time						Part Time						FTE					
	2011	2012	2013	2014	2015	5 yr Avg	2011	2012	2013	2014	2015	5 yr Avg	2011	2012	2013	2014	2015	5 yr Avg
NonMatric Total	17	18	28	29	11	21	192	255	198	209	117	194	81	103	94	99	50	85
Media Arts	1	4	3	1	0	2	0	1	0	0	0	0	1	4	3	1	0	2
Painting	15	11	16	20	17	16	3	5	2	3	3	3	16	13	17	21	18	17
Photography	17	23	20	22	20	20	3	3	3	3	2	3	18	24	21	23	21	21
Printmaking	8	10	10	7	7	8	4	2	1	0	1	2	9	11	10	7	7	9
Sculpture	8	15	19	13	11	13	2	1	2	0	0	1	9	15	20	13	11	14
Visual Comm Design	18	17	27	27	27	23	1	2	1	1	1	1	18	18	27	27	27	24
Hartford Art School Total	279	300	305	307	295	297	33	27	21	19	20	24	290	309	312	313	302	305
A & S / Undecided	136	119	145	117	98	123	7	7	2	2	2	4	138	121	146	118	99	124
Art History	8	6	0	1	0	3	2	1	0	0	0	1	9	6	0	1	0	3
Biology	135	149	148	127	141	140	8	8	10	10	6	8	138	152	151	130	143	143
Biology / Pre-Pharmacy	0	0	0	4	0	1	0	0	0	1	0	0	0	0	0	4	0	1
Chemistry	16	15	16	8	9	13	2	1	2	1	2	2	17	15	17	8	10	13
Chemistry / Pre-Pharmacy	0	0	0	1	0	0	0	0	0	0	0	0	0	0	0	1	0	0
Chemistry/Biology	26	22	25	26	29	26	2	1	2	1	0	1	27	22	26	26	29	26
Cinema	48	47	57	64	60	55	7	4	2	2	4	4	50	48	58	65	61	56
Communication	224	217	189	181	185	199	15	14	8	10	18	13	229	222	192	184	191	204
Computer Science	37	37	38	48	57	43	4	4	7	4	5	5	38	38	40	49	59	45
Criminal Justice	103	107	91	98	94	99	11	9	13	9	8	10	107	110	95	101	97	102
Economics	9	7	12	10	9	9	1	1	1	1	0	1	9	7	12	10	9	10
English	54	47	42	31	31	41	5	7	4	3	2	4	56	49	43	32	32	42
English/Secondary Ed	0	0	0	3	11	3	0	0	0	0	0	0	0	0	0	3	11	3
History	50	40	30	21	24	33	2	5	4	3	0	3	51	42	31	22	24	34
Interdiscplnry. Contract Major	0	0	1	2	1	1	0	0	0	0	0	0	0	0	1	2	1	1
International Studies	13	16	23	18	17	17	1	2	1	1	0	1	13	17	23	18	17	18
Judaic Studies	7	6	7	8	9	7	0	1	0	0	0	0	7	6	7	8	9	7
Math/Secondary Education	12	11	8	11	13	11	0	0	0	0	1	0	12	11	8	11	13	11
Mathematics	17	18	24	20	23	20	3	0	1	2	0	1	18	18	24	21	23	21
Modern Languages & Cultures	8	3	6	6	3	5	2	1	0	0	0	1	9	3	6	6	3	5
Philosophy	4	4	5	6	6	5	0	0	0	0	0	0	4	4	5	6	6	5
Physics	11	4	6	8	4	7	1	2	1	3	2	2	11	5	6	9	5	7
Politics & Government	64	63	58	60	57	60	0	0	2	3	3	2	64	63	59	61	58	61
Psychology	185	197	214	231	249	215	11	12	10	7	16	11	189	201	217	233	254	219
Rhetoric & Prof. Writing	9	8	6	1	0	5	0	0	0	0	0	0	9	8	6	1	0	5
Sociology	27	22	25	31	32	27	3	1	3	4	2	3	28	22	26	32	33	28
Art & Sciences Total	1205	1166	1176	1142	1162	1170	87	83	74	68	73	77	1234	1194	1201	1165	1186	1196
Accounting	106	91	103	105	104	102	26	26	29	17	21	24	115	100	113	111	111	110
Barney / Undecided	119	92	108	109	100	106	5	1	1	2	3	2	121	92	108	110	101	106
Economics & Finance	76	85	68	53	65	69	5	11	6	6	5	7	78	89	70	55	67	72
Entrepreneurial Studies	27	32	32	25	26	28	3	3	4	3	2	3	28	33	33	26	27	29
Insurance/Finance	37	33	33	43	60	41	7	6	4	4	2	5	39	35	34	44	61	43
Management	97	95	84	75	96	89	16	16	16	6	8	12	102	100	89	77	99	94
Marketing	99	97	93	97	114	100	2	3	5	6	3	4	100	98	95	99	115	101
Barney School of Business Total	561	525	521	507	565	536	64	66	65	44	44	57	582	547	543	522	580	555
Liberal Studies	470	449	415	401	398	427	4	3	6	6	6	5	471	450	417	403	400	428
Hillyer Total	470	449	415	401	398	427	4	3	6	6	6	5	471	450	417	403	400	428

Program	Full Time						Part Time						FTE					
	2011	2012	2013	2014	2015	5 yr Avg	2011	2012	2013	2014	2015	5 yr Avg	2011	2012	2013	2014	2015	5 yr Avg
Early Childhood Education	41	49	39	41	34	41	4	6	3	3	1	3	42	51	40	42	34	42
Elementary Education	30	23	16	18	27	23	1	2	2	0	0	1	30	24	17	18	27	23
Health Science/pre-prof	156	143	146	184	184	163	12	13	14	11	17	13	160	147	151	188	190	167
Health Sciences / PO	18	31	33	35	42	32	0	2	1	0	0	1	18	32	33	35	42	32
Health Sciences / PT	165	164	159	154	156	160	3	0	0	0	2	1	166	164	159	154	157	160
Human Services	21	10	2	0	0	7	2	1	0	0	0	1	22	10	2	0	0	7
Medical Cert	14	11	8	6	1	8	5	6	3	2	2	4	16	13	9	7	2	9
Nursing	0	0	0	0	0	0	79	77	73	78	80	77	26	26	24	26	27	26
Radiologic Technology	78	79	78	73	74	76	1	0	2	2	4	2	78	79	79	74	75	77
Respiratory Therapy	37	43	43	43	21	37	12	17	11	17	21	16	41	49	47	49	28	43
Secondary Education	16	22	13	12	7	14	0	0	1	0	0	0	16	22	13	12	7	14
Special Ed/Elementary	95	100	79	76	81	86	3	1	0	0	1	1	96	100	79	76	81	87
Undecided	19	7	20	14	0	12	0	2	1	0	0	1	19	8	20	14	0	12
College of Education, Nursing & Health Professions Total	690	682	636	656	647	662	122	128	111	113	128	120	731	725	673	694	690	702
Acoustical Eng & Music	34	40	41	37	46	40	2	0	0	0	0	0	35	40	41	37	46	40
Architectural Engineering Tech	185	182	168	141	132	162	18	10	17	10	13	14	191	185	174	144	136	166
Audio Engineering Technology	78	83	92	92	88	87	4	6	8	7	8	7	79	85	95	94	91	89
Biomedical Engineering	50	64	81	81	99	75	1	0	1	4	2	2	50	64	81	82	100	76
CETA Undecided	56	59	75	51	49	58	5	2	3	3	5	4	58	60	76	52	51	59
Civil Engineering	73	82	95	116	123	98	5	9	11	5	8	8	75	85	99	118	126	100
Computer Engineering	25	23	38	37	39	32	3	2	3	1	3	2	26	24	39	37	40	33
Computer EngTech	24	16	15	22	19	19	1	4	3	2	2	2	24	17	16	23	20	20
Electrical Engineering	44	50	57	69	83	61	4	11	7	5	8	7	45	54	59	71	86	63
Electromechanical Engr Tech	0	0	1	26	42	14	0	0	2	1	0	1	0	0	2	26	42	14
Electronic Engineering Tech	25	17	12	9	13	15	8	6	6	6	2	6	28	19	14	11	14	17
Engineering-Interdisciplinary	0	0	0	1	0	0	0	0	0	0	0	0	0	0	0	1	0	0
Environmental Engineering	2	1	0	1	0	1	0	0	0	0	0	0	2	1	0	1	0	1
Mechanical Engineering	135	163	179	193	215	177	16	19	13	18	10	15	140	169	183	199	218	182
Mechanical Eng Tech.	36	32	26	28	19	28	8	5	3	3	5	5	39	34	27	29	21	30
College of Engineering, Tech and Architecture Total	769	813	880	904	967	867	78	75	79	65	65	72	795	838	906	926	989	891
Actor Training	46	43	47	40	37	43	0	0	0	0	0	0	46	43	47	40	37	43
Bassoon Performance	3	3	2	3	3	3	0	0	0	0	0	0	3	3	2	3	3	3
Cello Performance	5	6	6	3	5	5	1	1	0	1	0	1	5	6	6	3	5	5
Clarinet Performance	5	5	5	4	5	5	0	0	0	0	0	0	5	5	5	4	5	5
Composition	16	17	17	14	12	15	0	3	1	0	0	1	16	18	17	14	12	15
Dance - Perf Emphasis	35	32	36	29	33	33	0	0	2	0	0	0	35	32	37	29	33	33
Dance-Ballet Pedagogy	11	19	11	16	13	14	0	0	0	0	0	0	11	19	11	16	13	14
Double Bass Performance	8	8	7	3	0	5	0	0	0	0	0	0	8	8	7	3	0	5
Euphonium Performance	4	4	4	3	3	4	0	0	0	0	0	0	4	4	4	3	3	4
Flute Performance	10	7	12	13	14	11	0	1	0	0	0	0	10	7	12	13	14	11
French Horn Performance	6	5	2	5	3	4	0	0	0	0	1	0	6	5	2	5	3	4
Guitar Performance	4	9	6	5	5	6	2	0	1	0	0	1	5	9	6	5	5	6
Interdiscplnry. Contract Major	0	1	1	1	1	1	0	0	0	0	0	0	0	1	1	1	1	1
Jazz Studies	34	47	36	40	31	38	2	0	4	1	3	2	35	47	37	40	32	38
Music	3	4	4	2	6	4	0	1	1	3	0	1	3	4	4	3	6	4
Music Educ/Instrumental	26	24	13	16	18	19	0	1	3	1	1	1	26	24	14	16	18	20
Music Education/Vocal	31	28	24	23	20	25	2	3	2	4	4	3	32	29	25	24	21	26
Music Hist/Prf Practices	0	2	2	0	0	1	0	0	0	1	0	0	0	2	2	0	0	1
Music Hist/Schlrship&Research	0	0	0	0	1	0	2	1	1	0	0	1	1	0	0	0	1	0
Music Management	21	25	23	21	22	22	2	1	4	1	0	2	22	25	24	21	22	23
Music Production & Tech	33	34	31	32	17	29	1	2	2	4	0	2	33	35	32	33	17	30

Program	Full Time						Part Time						FTE					
	2011	2012	2013	2014	2015	5 yr Avg	2011	2012	2013	2014	2015	5 yr Avg	2011	2012	2013	2014	2015	5 yr Avg
Music Theatre	96	95	102	104	110	101	2	3	1	2	0	2	97	96	102	105	110	102
Music Theory	2	0	0	2	2	1	1	0	0	0	0	0	2	0	0	2	2	1
Oboe Performance	8	4	7	2	2	5	0	0	0	1	0	0	8	4	7	2	2	5
Organ Performance	3	2	1	1	0	1	0	0	1	0	0	0	3	2	1	1	0	1
Percussion Performance	8	10	9	10	9	9	0	0	0	1	1	0	8	10	9	10	9	9
Performing Arts Mgmt	36	30	33	28	26	31	2	2	0	0	0	1	37	31	33	28	26	31
Piano Performance	11	8	11	7	8	9	0	1	1	3	1	1	11	8	11	8	8	9
Saxophone Performance	3	4	5	4	1	3	0	0	0	0	0	0	3	4	5	4	1	3
Trombone Performance	5	3	5	6	5	5	0	0	0	0	0	0	5	3	5	6	5	5
Trumpet Performance	4	4	3	2	4	3	0	0	0	1	0	0	4	4	3	2	4	3
Tuba Performance	5	3	2	3	0	3	0	0	0	0	0	0	5	3	2	3	0	3
Viola Performance	10	9	7	7	6	8	1	0	0	0	0	0	10	9	7	7	6	8
Violin Performance	9	7	12	12	15	11	2	1	1	0	1	1	10	7	12	12	15	11
Voice Performance	69	64	74	66	58	66	1	2	1	4	0	2	69	65	74	67	58	67
Hartt School Total	570	566	561	528	496	544	21	24	26	28	12	22	577	574	570	537	500	552
Certificate Pre-Med Profession	1	1	4	2	1	2	10	11	11	20	22	15	4	5	8	9	8	7
Liberal Studies	1	0	0	0	0	0	6	10	10	19	16	12	3	3	3	6	5	4
Multi-Media & Web Design Dev	30	20	17	13	14	19	1	4	2	2	2	2	30	21	18	14	15	20
Paralegal Studies	3	1	1	1	0	1	72	79	63	55	36	61	27	27	22	19	12	22
Undecided	0	0	0	0	0	0	0	0	1	1	0	0	0	0	0	0	0	0
University Studies	0	0	1	2	3	1	64	57	67	67	77	66	21	19	23	24	29	23
University Studies Total	35	22	23	18	18	23	153	161	154	164	153	157	86	76	74	73	69	76
Consortium Total						0	29	17	22	18	19	21	10	6	7	6	6	7

Data note: Includes all students enrolled in a major. Students with multiple majors will be counted twice. Similar programs were grouped into categories—such as Business Certificate, etc. Some majors were removed from the list if there had been no enrollment for the past two years, including: Cert Prof & Tech Writing, English Literature, Humanities, Political Economy, Political Science, Social Sciences, Behavioral Studies, Chemical Engineering Tech, Env Sci, Harp Performance, Drawing, Interactive Info Tech, etc.

FTE calculation is different from previous versions of the Fact Book. FTE is calculated as $(FT+(PT*1/3))$.

Trends in Graduate Majors

Program	Full Time						Part Time						FTE					
	2011	2012	2013	2014	2015	5 yr Avg	2011	2012	2013	2014	2015	5 yr Avg	2011	2012	2013	2014	2015	5 yr Avg
Nonmatric Total	6	2	4	3	2	3	59	70	65	40	51	57	26	25	26	16	19	22
Illustration (LR)	28	27	27	30	23	27	0	0	0	1	0	0	28	27	27	30	23	27
Photography (LR)	32	25	25	24	27	27	0	0	0	0	0	0	32	25	25	24	27	27
Hartford Art School Total	60	52	52	54	50	54	0	0	0	1	0	0	60	52	52	54	50	54
Biology/Neuroscience	23	28	29	31	32	29	15	13	15	14	11	14	28	32	34	36	36	33
Communication	18	13	17	23	19	18	24	26	20	18	17	21	26	22	24	29	25	25
General Psychology	9	4	7	1	0	4	3	6	5	4	3	4	10	6	9	2	1	6
Organizational Psychology	7	4	5	5	10	6	21	23	19	29	25	23	14	12	11	15	18	14
Psychology MA-Clinical	25	23	15	20	24	21	0	1	2	0	0	1	25	23	16	20	24	22
Psychology PSYD-Clinical	65	65	67	69	68	67	60	64	62	55	61	60	85	86	88	87	88	87
School Psychology	22	23	20	23	24	22	12	9	12	13	8	11	26	26	24	27	27	26
Arts & Sciences Total	169	160	160	172	184	169	137	142	135	133	144	138	215	207	205	216	232	215
Business Certificate	0	0	0	0	1	0	3	5	3	8	7	5	1	2	1	3	3	2
MBA	58	52	53	54	41	52	278	271	293	332	294	294	151	142	151	165	139	149
MSAT	33	21	33	24	20	26	60	75	57	54	63	62	53	46	52	42	41	47
Barney School of Business Total	91	73	86	78	62	78	341	352	353	394	365	361	205	190	204	209	184	198
Early Childhood Education	6	7	11	7	8	8	27	25	26	21	15	23	15	15	20	14	13	15
Early Childhood/Montessori	0	0	1	2	2	1	0	3	6	7	4	4	0	1	3	4	3	2
Educational Leadership	39	44	48	48	47	45	34	24	24	27	27	27	50	52	56	57	56	54
Educational Technology	1	0	0	0	0	0	24	12	1	0	0	7	9	4	0	0	0	3
Elementary / Montessori	0	0	1	0	1	0	0	2	11	3	3	4	0	1	5	1	2	2
Elementary Education	19	13	12	6	10	12	18	16	8	18	16	15	25	18	15	12	15	17
Non-Matric Prost/Ortho	0	0	0	0	0	0	14	0	1	0	0	3	5	0	0	0	0	1
Nursing	2	3	2	2	4	3	147	143	156	123	103	134	51	51	54	43	38	47
Nursing Education	0	0	0	0	0	0	1	0	1	0	0	0	0	0	0	0	0	0
Physical Therapy	117	118	122	111	116	117	1	3	1	1	0	1	117	119	122	111	116	117
Prosthetics & Orthotics	10	23	38	37	37	29	2	2	0	1	0	1	11	24	38	37	37	29
Transitional Prosthetics & Orthotics	0	0	0	5	11	3	0	0	0	6	12	4	0	0	0	7	15	4
College of Education, Nursing & Health Professions Total	194	208	235	218	239	219	268	230	235	207	187	225	283	285	313	287	301	294
Architecture	21	28	28	34	37	30	10	6	4	7	7	7	24	30	29	36	39	32
Civil Engineering	16	12	8	18	22	15	21	15	19	18	13	17	23	17	14	24	26	21
Electrical Engineering	7	8	16	33	56	24	26	15	14	14	16	17	16	13	21	38	61	30
Environmental Engineering	3	2	3	1	3	2	7	11	5	6	5	7	5	6	5	3	5	5
Master of Engineering	3	3	1	1	1	2	6	6	7	7	5	6	5	5	3	3	3	4
Mechanical Engineering	10	5	8	32	45	20	35	34	42	40	46	39	22	16	22	45	60	33
College of Engineering, Technology and Architecture Total	60	58	64	119	164	93	105	90	91	92	92	94	95	88	94	150	195	124
Bassoon Performance	2	2	2	1	1	2	0	1	0	1	1	1	2	2	2	1	1	2
Cello Performance	11	7	8	10	7	9	2	0	0	1	3	1	12	7	8	10	8	9
Choral Conducting	1	1	0	0	1	1	1	1	2	0	0	1	1	1	1	0	1	1
Clarinet Performance	2	3	5	4	5	4	0	0	0	0	0	0	2	3	5	4	5	4
Composition	21	17	15	12	14	16	1	4	5	4	3	3	21	18	17	13	15	17
Double Bass Performance	5	4	1	3	4	3	1	1	1	0	0	1	5	4	1	3	4	4
Euphonium Performance	2	4	1	1	0	2	0	0	0	0	0	0	2	4	1	1	0	2
Flute Performance	5	7	5	3	3	5	0	0	1	0	0	0	5	7	5	3	3	5
French Horn Performance	3	3	4	3	3	3	0	0	0	0	0	0	3	3	4	3	3	3
Guitar Performance	3	5	2	3	4	3	1	1	0	0	2	1	3	5	2	3	5	4
Music Educ/Choral Conducting	1	0	0	1	1	1	0	1	0	0	0	0	1	0	0	1	1	1
Music Educ/Instrumental Conduc	1	0	1	0	0	0	3	2	2	4	0	2	2	1	2	1	0	1
Music Educ/Research Emphasis	1	0	0	1	1	1	0	1	1	1	0	1	1	0	0	1	1	1
Music Education/Kodaly	1	4	2	0	0	1	3	3	2	4	1	3	2	5	3	1	0	2
Music Education/Pedagogy	8	4	5	6	4	5	8	7	3	6	5	6	11	6	6	8	6	7

Program	Full Time						Part Time						FTE					
	2011	2012	2013	2014	2015	5 yr Avg	2011	2012	2013	2014	2015	5 yr Avg	2011	2012	2013	2014	2015	5 yr Avg
Music Education/Technology	0	1	0	1	1	1	0	0	0	0	0	0	0	1	0	1	1	1
Music Hist/Prfrmnce Practices	0	0	0	1	1	0	0	0	0	0	1	0	0	0	0	1	1	0
Music Hist/Schlrship&Research	2	2	2	1	1	2	0	0	1	0	0	0	2	2	2	1	1	2
Music Theory	1	1	1	1	0	1	0	0	0	0	0	0	1	1	1	1	0	1
Oboe Performance	3	3	2	2	3	3	0	0	0	0	0	0	3	3	2	2	3	3
Orchestral Conducting	2	3	3	1	2	2	0	0	0	0	0	0	2	3	3	1	2	2
Percussion Performance	5	3	5	3	7	5	1	2	1	2	2	2	5	4	5	4	8	5
Piano Perf/Pedagogy Emphasis	2	2	2	2	2	2	2	0	2	0	0	1	3	2	3	2	2	2
Piano Performance	17	15	16	17	15	16	5	8	6	3	6	6	19	18	18	18	17	18
Saxophone Performance	8	9	8	3	1	6	0	1	0	1	1	1	8	9	8	3	1	6
Trombone Performance	2	2	2	0	2	2	0	0	0	0	0	0	2	2	2	0	2	2
Trumpet Performance	4	3	1	2	2	2	0	0	1	0	0	0	4	3	1	2	2	2
Tuba Performance	1	2	1	2	3	2	1	1	2	1	1	1	1	2	2	2	3	2
Viola Perf.-Suzuki Ped. Emph.	3	2	1	1	1	2	1	0	1	0	0	0	3	2	1	1	1	2
Viola Performance	7	7	6	4	4	6	1	0	0	0	0	0	7	7	6	4	4	6
Violin Perf.-Suzuki Ped. Emph.	8	7	5	3	3	5	1	1	1	1	0	1	8	7	5	3	3	5
Violin Performance	9	13	10	5	4	8	2	0	1	0	2	1	10	13	10	5	5	9
Voice Performance	4	2	2	2	1	2	2	1	2	1	2	2	5	2	3	2	2	3
Hartt School Total	147	139	118	99	101	121	37	36	36	30	30	34	159	151	130	109	111	132

Data note: Includes all students enrolled in a major. Students with multiple majors will be counted twice. Similar programs were grouped into categories—such as Early Childhood and Early Childhood NC. Some majors were removed from the list if there had been no enrollment for the past two years, including: Organizational Behavior, Admin/Supervision, Counseling, Deaf Education, Piano Accompanying, Guidance/Counseling, Harp Performance, Metrology, CAGS 30 hr Cert, etc.

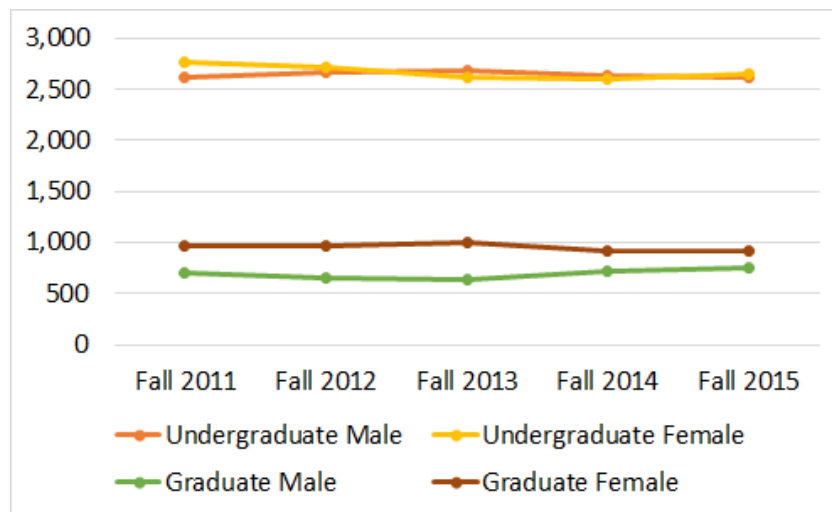
FTE calculation is different from previous versions of the Fact Book. FTE is calculated as (FT+(PT*1/3)).

ENROLLMENT

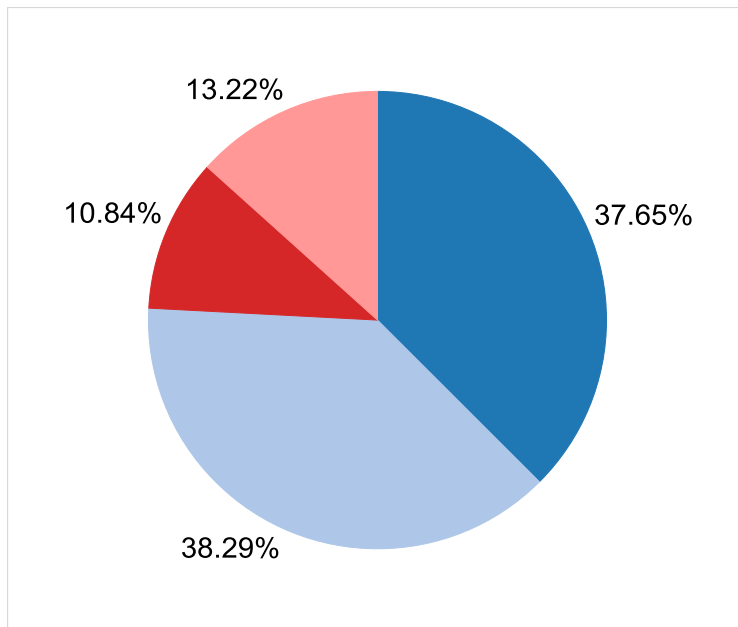
Diversity

Fall Enrollment Gender Trends

		Fall 2010	Fall 2011	Fall 2012	Fall 2013	Fall 2014	Fall 2015
Undergraduate	Male	2,629	2,613	2,664	2,677	2,629	2,615
	Female	2,869	2,766	2,716	2,624	2,597	2,659
Graduate	Male	680	701	652	639	718	753
	Female	1,002	974	960	995	922	918



Fall 2015 Enrollment Distribution by Gender and Level



- Undergraduate, Male
- Undergraduate, Female
- Graduate, Male
- Graduate, Female

Data note: Gender data includes all students—degree seeking, non-degree (consortium, high school, ELI, etc). Data for 2013—1 undergraduate and 2 graduate students missing gender data

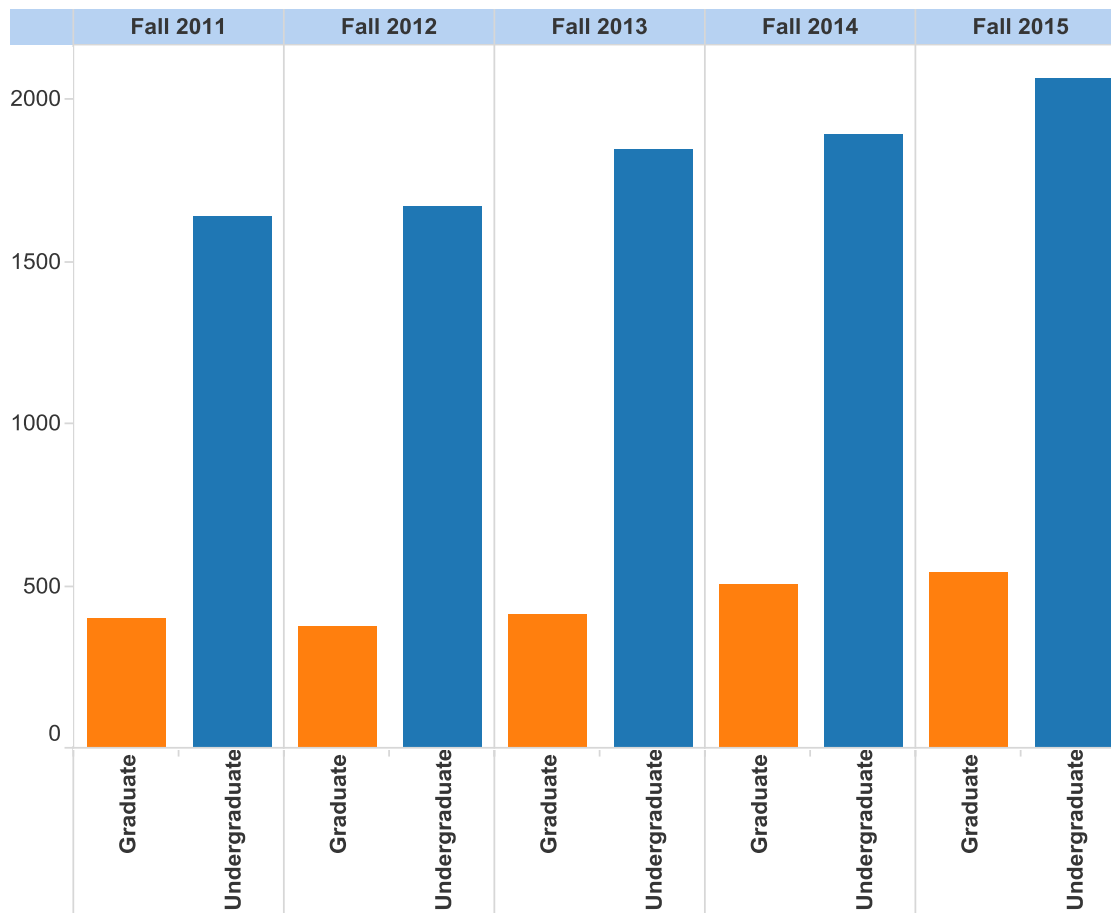
Fall 2015 Enrollment by Race and Ethnicity, Student Level and Time Status

	Undergraduate			Graduate			Grand Total
	Full Time	Part Time	Total	Full Time	Part Time	Total	
African American	692	112	804	34	84	118	922
American Indian	19	3	22				22
Asian	150	10	160	23	33	56	216
Caucasian	2,543	301	2,844	458	582	1,040	3,884
Hispanic	537	59	596	47	47	94	690
Nat Hawaiian/Oth Pac. Islander	2		2	1		1	3
Non-Resident Alien	321	16	337	207	41	248	585
Two or More Races	139	6	145	12	13	25	170
Unknown or No Reply	156	208	364	20	69	89	453
Grand Total	4,559	715	5,274	802	869	1,671	6,945

Data note: Race and ethnicity categories mirror reporting requirements for the National Center for Educational Statistics (NCES).

Minority Student Body Trend, Fall Census

Table above: includes entire student population: degree seeking and non-degree



seeking (ELI, high school, consortium students, etc) by level and time status.

Chart to the left: includes degree and non-degree seeking (ELI, high school and consortium students, etc.). Minority Student Body includes all race and ethnicities excluding those that identified as white as well as those for whom no ethnicity was recorded (unknown and/or no reply).

ENROLLMENT

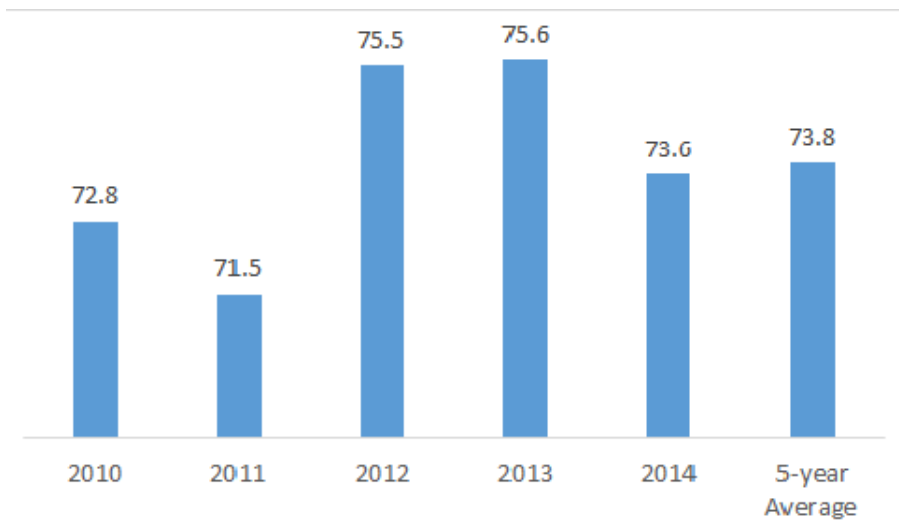
Retention

First to Second Year Retention Rate by College

Fall Cohorts 2010-2014

	2010	2011	2012	2013	2014	5-Year
All Programs	71.7	67.6	72.2	73.9	71	71.3
All Four-Year	72.8	71.5	75.5	75.6	73.6	73.8
Hartford Art School	82.6	77.2	87.8	81.1	78.6	81.5
Arts & Sciences	65.0	62.3	71.9	71.0	68.7	67.8
Barney School	77.2	68.1	65.4	69.0	68.1	69.6
ENHP	72.3	72.7	73.5	76.1	76.4	74.2
CETA	74.8	73.4	75.6	79.4	74.6	75.6
The Hartt School	82.5	84.1	86.7	85.3	82.9	84.3
University Studies	83.3	100.0	50.0	66.7	100	80.0
All Two-Year	65.8	53.1	60.1	65.7	60.4	61.0
Hillyer	65.8	53.1	60.1	65.7	60.4	61.0

First to Second Year Retention in Four-Year Programs



Data note: numbers reflect IPEDS calculation. Cohort includes first time, full time, degree seeking students enrolled in the fall that were enrolled in the subsequent fall at any status or degree type.

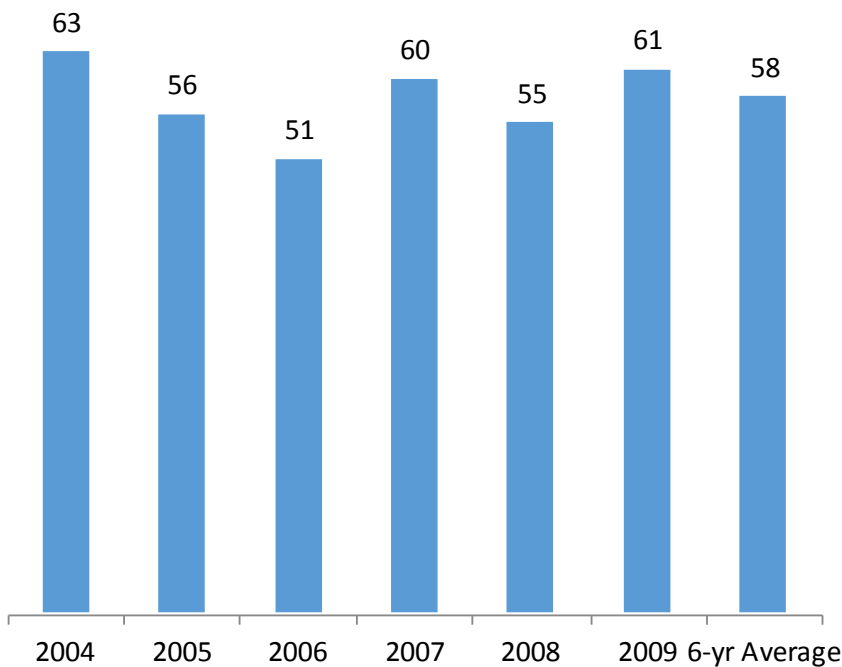
COMPLETIONS

Graduation Rate

6-year (150%) Graduation Rate by Fall Cohort by College and Degree

	2004	2005	2006	2007	2008	2009	6-Year Average
Total University	58	55	48	56	54	58	55
All Four –Year	63	56	51	60	55	61	58
HAS	67	67	60	76	63	59	65
A & S	56	48	46	50	47	54	50
Barney	65	60	47	52	54	49	55
ENHP	70	69	54	61	56	75	64
CETA	67	50	52	64	56	62	59
Hartt	61	63	57	70	70	74	66
University Studies	82	73	67	50	50	50	62
All Two-Year							
Hillyer	47	52	41	46	50	47	47

All Four-Year Programs 6-year (150%) Graduation Rate by Fall Cohort



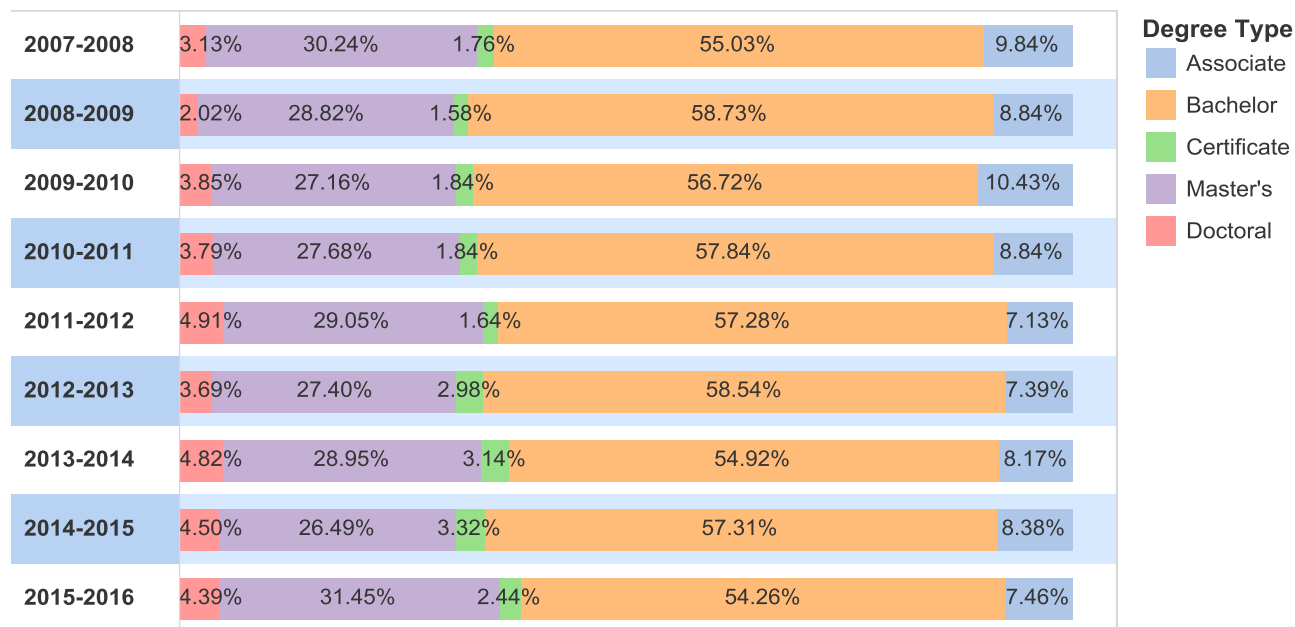
Data note: Hillyer graduation rates are based on 150% or three years. It includes only those students who were awarded an associate degree. If a student transferred to a bachelors program without completing the AA/AS they are not included in the rate even if they earned a bachelors degree at a later date.

COMPLETIONS

Degree Conferral

Academic Year	Certificate	Associate's	Bachelor's	Master's	Doctoral	Total
1997-98	24	65	778	403	21	1,291
1998-99	6	130	807	474	15	1,432
1999-00	7	120	928	416	28	1,499
2000-01	5	148	806	457	34	1,450
2001-02	5	194	894	455	29	1,577
2002-03	8	174	948	443	50	1,623
2003-04	24	178	911	410	49	1,572
2004-05	32	172	951	465	44	1,664
2005-06	38	151	992	502	53	1,736
2006-07	37	165	1025	501	35	1,763
2007-08	39	173	969	532	55	1,768
2008-09	21	162	1072	528	37	1,820
2009-10	34	186	1016	489	69	1,794
2010-11	32	168	1094	523	72	1,889
2011-12	31	122	980	496	84	1,713
2012-13	51	134	1060	497	67	1,809
2013-14	59	156	1049	552	92	1,908
2014-15	59	149	1019	471	80	1,778
2015-16	46	141	1025	594	83	1,889

Data note: Degrees awarded by academic year (June—May). Data from 2007 forward has been revised for this edition. The new calculation counts students for each degree earned during that academic year. Therefore if a student earns both an AS and a BS in that academic year the student is counted twice. In addition, in past editions the numbers were frozen in May but there were a significant number of back dated grads. Going forward these numbers will be updated in the Fall to capture this population. Masters includes MA/MS, CAGS, Art DP, Specialist Diploma, and 6th Year Certificates.

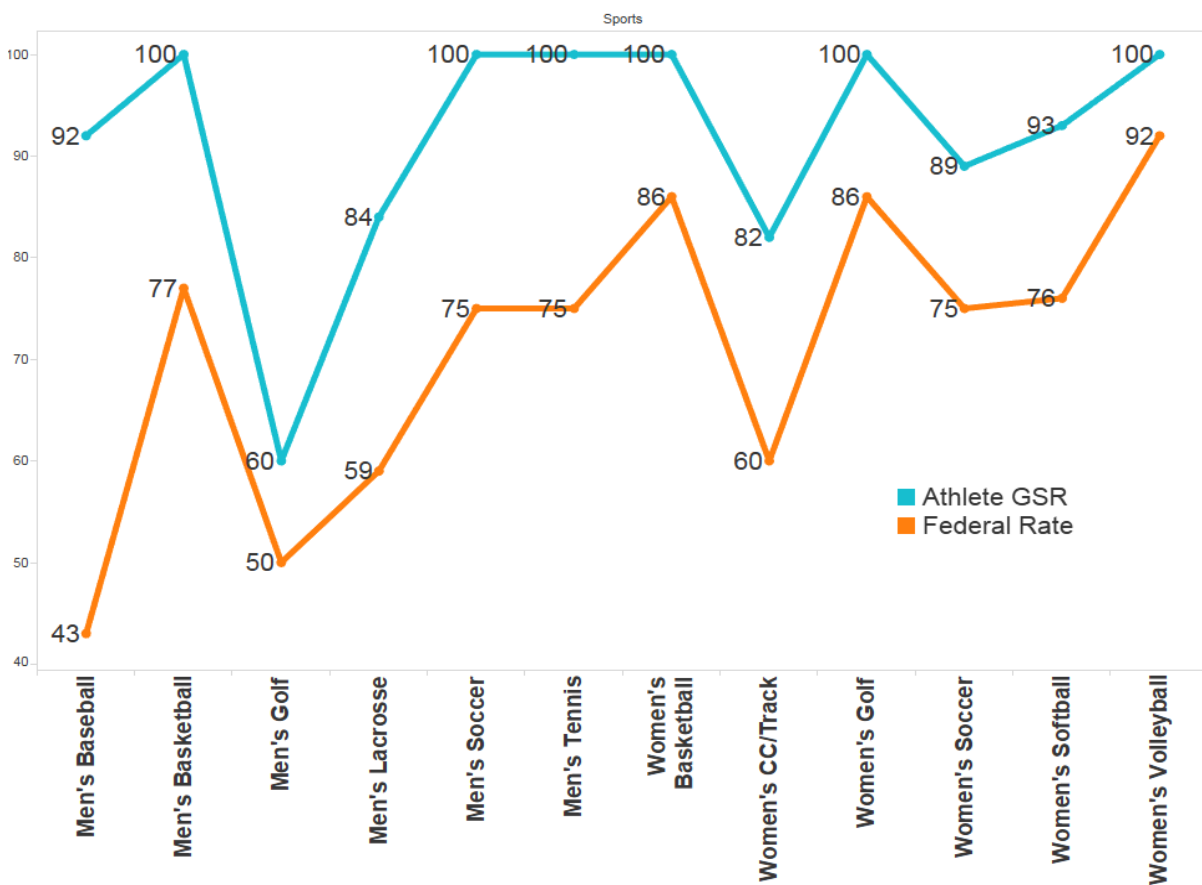


PERSISTENCE

Athlete's Graduation Success Rates

Graduation Rate—2009 Cohort

Sports	Athlete GSR	Federal Rate
Men's Baseball	92	43
Men's Basketball	100	77
Men's Golf	60	50
Men's Lacrosse	84	59
Men's Soccer	100	75
Men's Tennis	100	75
Women's Basketball	100	86
Women's CC/Track	82	60
Women's Golf	100	86
Women's Soccer	89	75
Women's Softball	93	76
Women's Volleyball	100	92



FACULTY

Composition

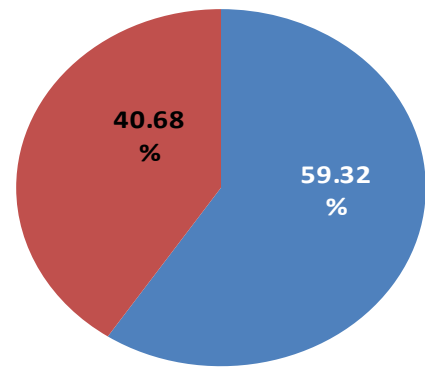
	2011	2012	2013	2014	2015
Total Full Time Faculty	347	346	343.5	350	354
Tenure Status					
Tenured	212	207	216	224	210
Untenured	135	139	127.5	126	144
Rank					
Professor	83.5	89.5	93.5	99	92
Associate Professor	137	137	138	136	136
Assistant Professor	101.5	108.5	102	82	83
Other	25	11	10	32	43
Gender					
Female	134	137	138	142	143
Male	213	209	205.5	208	211
College					
Hartford Art School	22.0	25.0	28.0	28	28
Arts & Sciences	117.0	112.0	108.8	110.33	108.8
Barney	39.0	37.0	36.0	37	39
Hillyer	38.0	38.0	35.2	35.17	35.7
ENHP	35.0	38.0	42.5	40.5	42.5
CETA	37.0	37.0	36.0	41	44
The Hartt School	55.0	55.0	55.0	56	53
Office of the Provost	1.0	2.0	1.0	1	2
University Studies	2.0	1.5	1.0	1	1

Data note: Includes Full Time faculty only.

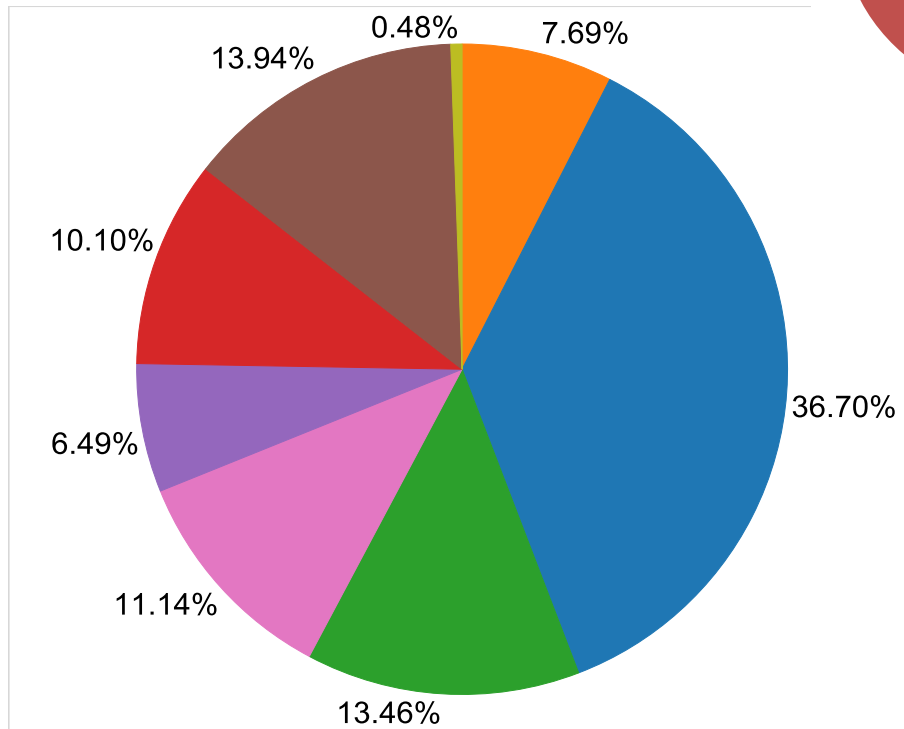
Full Time Faculty by Tenure Status and College

	Tenure	Total
Hartford Art School	16	28
Arts & Sciences	76.33	108.83
Barney	28	39
Hillyer	23.17	35.67
ENHP	13.5	42.5
CETA	21	44
The Hartt School	29	53
University Studies	1	1
Total	208	352

Tenured Faculty as a Percent of all University Full Time Faculty



Distribution of Full Time Tenured Faculty by College



College

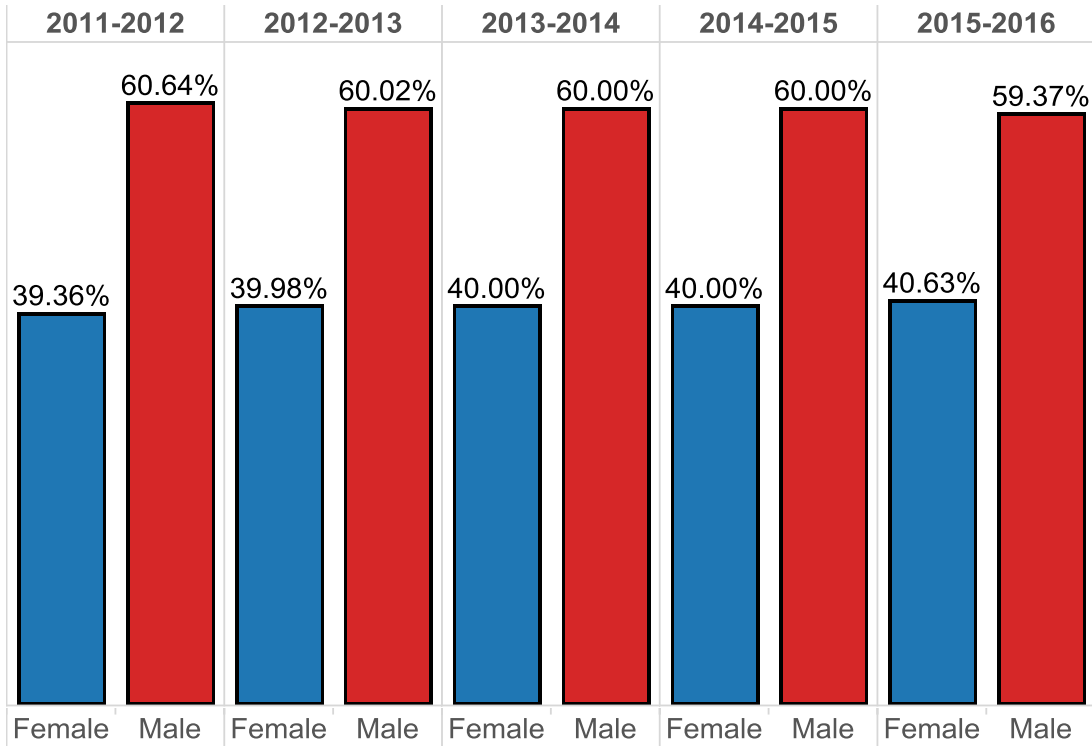
- Art
- A & S
- Barney
- Hillyer
- ENHP
- CETA
- Hartt
- Univ. Studies

Data note: Table and chart excludes Office of the Provost FT Faculty.

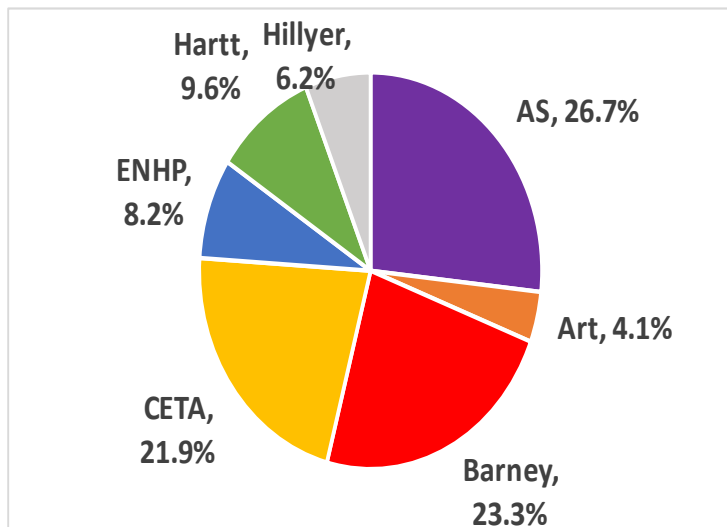
FACULTY

Diversity

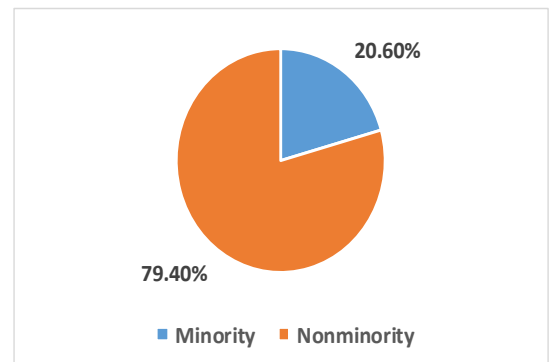
Full Time Faculty Gender Trends



Percent of University Minority Faculty by College, Fall 2015



Minority Faculty Total University



Data note: Race and ethnicity categories mirror reporting requirements for the National Center for Educational Statistics (NCES).

Minority Faculty data includes all race and ethnicities excluding those that identified as white as well as those for whom no ethnicity was recorded (unknown and/or no reply).

FINANCE

Overview

REVENUES:	FY09	FY10	FY11	FY12	FY13	FY14	FY15
Gross Full Time Undergraduate Tuition	125,135	125,743	129,443	130,720	134,749	139,914	141,235
Financial Aid - Full Time Undergraduate	(51,359)	(55,795)	(58,701)	(60,893)	(61,459)	(65,428)	(65,614)
Net Full Time Undergraduate Tuition	73,776	69,948	70,742	69,827	73,290	74,486	75,621
Gross Other Tuition	23,311	24,042	25,496	25,831	27,396	28,735	30,904
Financial Aid - Other	(2,806)	(2,722)	(3,001)	(3,235)	(3,495)	(3,578)	(3,449)
Net Other Tuition	20,505	21,321	22,495	22,596	23,901	25,157	27,455
Total Net Tuition Income	94,281	91,269	93,237	92,424	97,191	99,642	103,076
Housing	24,955	25,354	26,182	26,454	25,503	25,488	25,701
Dining	15,453	15,655	16,221	16,302	16,044	16,561	16,591
Unrestricted Annual Giving	697	719	629	555	667	711	665
Other Revenues	16,188	16,141	15,870	16,294	16,462	16,779	17,715
Total Revenue	151,574	149,138	152,140	152,028	155,866	159,182	163,748
EXPENDITURES:							
Full Time Faculty Salaries	23,320	24,955	24,879	25,568	25,592	25,710	26,710
Part Time Faculty Salaries	10,406	10,686	10,275	10,772	11,186	10,916	11,515
Total Faculty Salaries	33,726	35,642	35,153	36,341	36,779	36,626	38,225
Full Time Staff Salaries	30,096	31,924	30,676	30,985	31,743	32,344	32,015
Part Time Staff Salaries	4,932	4,818	4,426	4,786	4,887	4,690	4,970
Total Staff Salaries	35,028	36,742	35,102	35,771	36,629	37,034	36,985
Total Salaries	68,754	72,384	70,256	72,111	73,408	73,660	75,210
Fringe Benefits	23,353	23,042	21,813	23,695	23,571	22,547	23,406
Total Salaries and Fringe Benefits	92,107	95,426	92,069	95,806	96,979	96,207	98,616
Debt Service	9,581	9,381	9,386	9,420	6,904	7,769	8,306
Utilities	6,366	5,730	5,809	5,342	5,294	5,342	5,473
Dining	11,637	11,906	12,619	12,855	12,548	12,849	12,586
Equipment & Furniture	2,142	1,606	1,721	2,608	2,661	3,227	2,596
Other Expenditures	27,573	24,824	26,741	25,447	28,551	28,619	31,317
Transfer to Operating Reserve	0	0	0	0	0	0	0
Total Expenditures	149,406	148,873	148,344	151,478	152,937	154,013	158,894
Net Results	\$2,168	\$265	\$3,795	\$550	\$2,929	\$5,168	\$4,854

LIBRARY

Overview

Libraries Circulation						
	2011/12	2012/13	2013/14	2014/15	2015/16	
External						
W. H. MORTENSEN Library	72,889	71,282	82,490	89,370	96,816	
ALLEN Library	56,384	52,164	45,864	42,671	48,531	
<i>Subtotal</i>	129,273	123,446	128,354	139,789	145,347	
Internal						
MORTENSEN Reserves	*6,897	*3439	16799	17529	14,423	
ALLEN Reserves	2,397	1,871	1,647	1,812	1,597	
<i>Subtotal</i>	9,294	5,310	18,446	19,341	16,020	
TOTAL	132,740	133,664	158,235	164,688	16,020	
* reserves are now through Blackboard						

Interlibrary Loans						
	2011/12	2012/13	2013/14	2014/15	2015/16	
Loaned To Other Libraries						
Books and Photocopies	2,800	2,829	2,469	2,500	3,050	
Unfilled Requests	2,055	2,231	2,341	2,425	3,218	
<i>Subtotal: Transactions</i>	4,855	5,060	4,810	4,925	6268	
Borrowed From Other Libraries						
<i>Subtotal: Transactions</i>	4,167	5,818	7,989	7,138	9297	
TOTAL TRANSACTIONS	9,022	10,878	12,799	12,063	15,565	

Reference Services, Hours and Patronage						
	2011/12	2012/13	2013/14	2014/15	2015/16	
Reference Classes						
Number of Reference Classes	350	540	642	640	704	
Total Students in Classes	6,353	15,750	10,710	10,510*	11,790	
Hours of Operation /per week						
W. H. MORTENSEN Library	101.5	101.5	101.5	101.5	104	
ALLEN Library	84.5	84.5	84.5	84.5	84.5	
Patronage						
MORTENSEN Library Gate Count	340,000	346,254	373,653	405,222	460,765	
ALLEN Library Gate Count	54,684	53,635	51,144	50,419	48,926	
TOTAL	394,684	399,889	424,797	455,641	509,691	
Totals are as of this publication date.						

ACCREDITATION & DEGREES

Overview

University of Hartford New England Association of Schools and Colleges (NEASC) Licensed by State of Connecticut, Board of Higher Education	
College of Arts and Sciences	
Accreditation	
Chemistry (B.A./B.S.) - American Chemical Society Clinical Psychology (Psy.D.) - American Psychological Association (APA) School Psychology (M.S.) - National Association of School Psychologists and Council for the Accreditation of Educator Preparation (CAEP)	
Degrees	
<i>Doctoral Degree</i> Clinical Psychology (Psy.D.) <i>Master of Arts</i> Communication Clinical Practices in Psychology <i>Master of Science</i> Biology: Neuroscience Organizational Psychology School Psychology <i>Bachelor of Arts</i> Biology Chemistry Cinema Communication Computer Science Contract Major Criminal Justice Economics English English - Secondary Education History International Studies Judaic Studies	<i>Bachelor of Arts (continued)</i> Mathematics Mathematics - Secondary Education Philosophy Physics Politics and Government Psychology Sociology <i>Bachelor of Science</i> Biology Chemistry Chemistry/Biology Computer Science Mathematics Physics <i>Associate of Arts</i> Communication Humanities Social Sciences <i>Associate of Science</i> Biological Sciences Physical Sciences

Barney School of Business	
Accreditation	
AACSB International - The Association to Advance Collegiate Schools of Business	
Degrees	
<i>Master of Business Administration</i> <i>Master of Science</i> Accounting and Taxation Management	<i>Bachelor of Science in Business Administration</i> Accounting Economics/Finance Entrepreneurial Studies Insurance/Finance Management Marketing

Hartford Art School	
Accreditation	
Institutional Member of National Association of Schools of Art and Design (NASAD)	
Degrees	
<i>Master of Fine Arts in Illustration</i> <i>(low residency)</i> <i>Master of Fine Arts in Photography</i> <i>(low residency)</i> <i>Master of Fine Arts in Interdisciplinary Art</i> <i>(low residency)</i> <i>Bachelor of Fine Arts</i> Ceramics Visual Communication Design	<i>Bachelor of Fine Arts (continued)</i> Illustration Painting Photography Printmaking Sculpture <i>Bachelor of Arts</i> Art History

The Hartt School	
Accreditation	
National Association of Schools of Music (NASM) National Association of Schools of Dance (NASD) National Association of Schools of Theatre (NAST) Music Education (Undergraduate and Graduate) - State of Connecticut, Board of Education, and Council for Accreditation of Education Preparation (CAEP)	
Degrees	
<i>Doctor of Musical Arts</i> Composition Conducting Instrumental Performance Voice Performance <i>Doctor of Philosophy</i> Music Education <i>Master of Music</i> Composition Conducting Performance Music History Music Theory <i>Master of Music Education</i> <i>Artist Diploma and Graduate</i> <i>Professional Diploma</i> with emphases in: Composition Conducting (Choral Conducting GPD only) Instrumental Performance Voice Performance	<i>Bachelor of Music</i> Composition Performance Jazz Studies Music Education Music History Music Management Music Production & Technology Music Theory <i>Bachelor of Fine Arts</i> Dance Performance Dance Pedagogy Music Theatre Actor Training <i>Bachelor of Arts</i> Music Major Performing Arts Management <i>Undergraduate Diploma</i>

Hillyer College	
Degrees	
<i>Associate in Arts</i> Liberal Arts Concentrations in: American Studies Environmental Studies Business Studies Global Studies Education Studies Health Science Studies <i>Associate in Science</i> Concentrations in Health Science Studies	

College of Education, Nursing and Health Professions

Accreditation

Department of Education
 State of Connecticut, Board of Education
 Council for the Accreditation of Educator Preparation (CAEP)
Department of Health Sciences and Nursing
 Commission on Collegiate Nursing Education (CCNE)
 Radiologic Technology - Joint Review Committee on Education in
 Radiologic Technology (JRCERT)
 Respiratory Care - Commission on Accreditation for Respiratory Care (CoARC)
Department of Rehabilitation Services
 Physical Therapy - Commission on Physical Therapy Education (CAPTE)
 Prosthetics and Orthotics - National Commission on Orthotics and Prosthetics
 Education (NCOPE)
 Commission on Accreditation of Allied Health Education Programs (CAAHEP)

Degrees

<i>Doctor of Education:</i> Educational Leadership	<i>Bachelor of Science:</i> Early Childhood Education
<i>Doctor of Physical Therapy</i>	Elementary Education
<i>Master of Education:</i> Early Childhood Education	Health Science
Elementary Education	Radiologic Technology
Special Education	Respiratory Care
<i>Master of Science in Nursing</i>	Integrated Elementary
<i>Master of Science in Prosthetics and Orthotics</i>	Special Education
	<i>Bachelor of Science in Nursing</i>
	<i>Associate in Science:</i> Health Science

University Studies

Accreditation

Paralegal Studies - American Bar Association (ABA)

Degrees

<i>Bachelor of Arts</i> Multimedia Web Design & Development University Studies	<i>Associate of Arts</i> Liberal Arts <i>Associate of Science (A.S.)</i> Paralegal Studies
---	---

College of Engineering, Technology, and Architecture

Accreditation

Engineering Accreditation Commission of the Accreditation Board for Engineering and Technology (EAC/ABET): Undergraduate majors in Acoustical Engineering and Music, Biomedical Engineering, Civil Engineering, Computer Engineering, Electrical Engineering, and Mechanical Engineering.

Engineering Technology Accreditation Commission of the Accreditation Board for Engineering and Technology (ETAC/ABET): Undergraduate majors in Architectural Engineering Technology, Electronic Engineering Technology, and Mechanical Engineering Technology

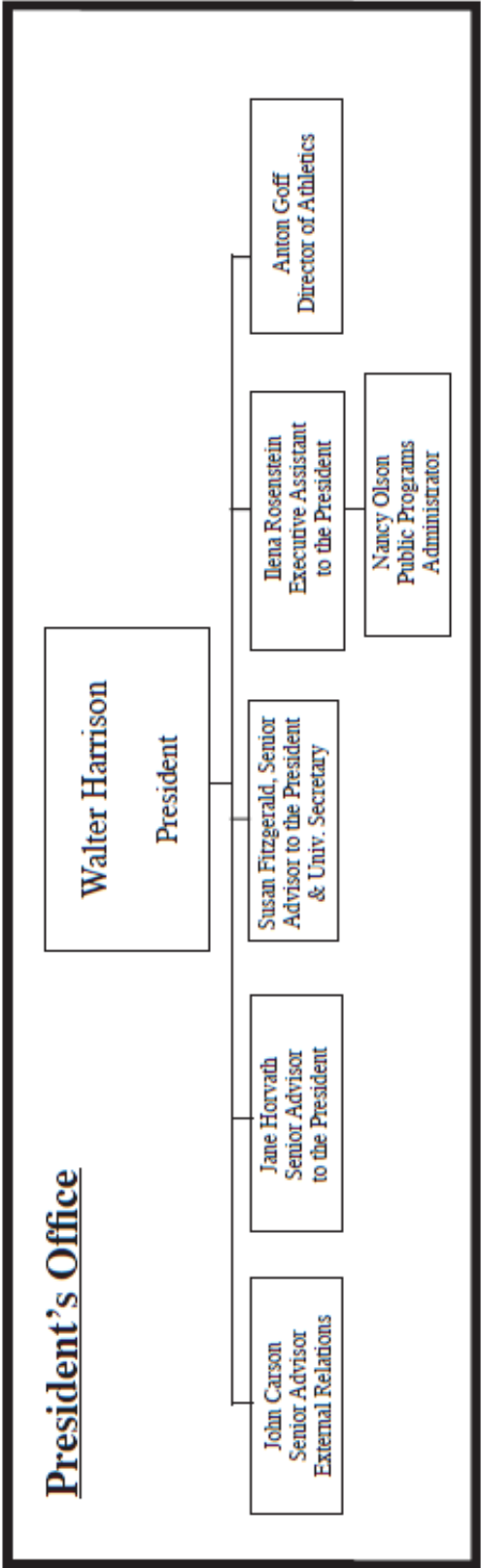
National Architecture Accreditation Board (NAAB): Masters in Architecture.

Degrees

<p><i>Master of Architecture (M.Arch.)</i></p> <p><i>Master of Engineering (M.Eng.)</i> Civil Engineering Electrical Engineering Environmental Engineering Mechanical Engineering</p> <p><i>Master of Science in Engineering (M.Eng.)</i> Civil Engineering Electrical Engineering Environmental Engineering Mechanical Engineering</p> <p><i>Bachelor of Science in Civil Engineering (B.S.C.E.)</i> Environmental Concentration</p> <p><i>Mechanical Engineering (B.S.M.E.)</i> Acoustics Concentration Energy Concentration Manufacturing Concentration</p> <p><i>Engineering (B.S.E.) in</i> Acoustics and Music Biomedical Engineering Interdisciplinary Major</p>	<p><i>Electrical Engineering (B.S.E.E.)</i> <i>Computer Engineering (B.S.Cmp.E.)</i></p> <p><i>Bachelor of Science (B.S.) in</i> Architectural Engineering Technology Audio Engineering Technology Electronic Engineering Technology Computer Engineering Technology Engineering Technology (Contract Major) Electromechanical Engineering Technology</p> <p><i>Associate in Science (A.S.)</i> Computer Engineering Technology Electronic Engineering Technology Engineering Science Technology</p>
---	--

ORGANIZATIONAL CHARTS

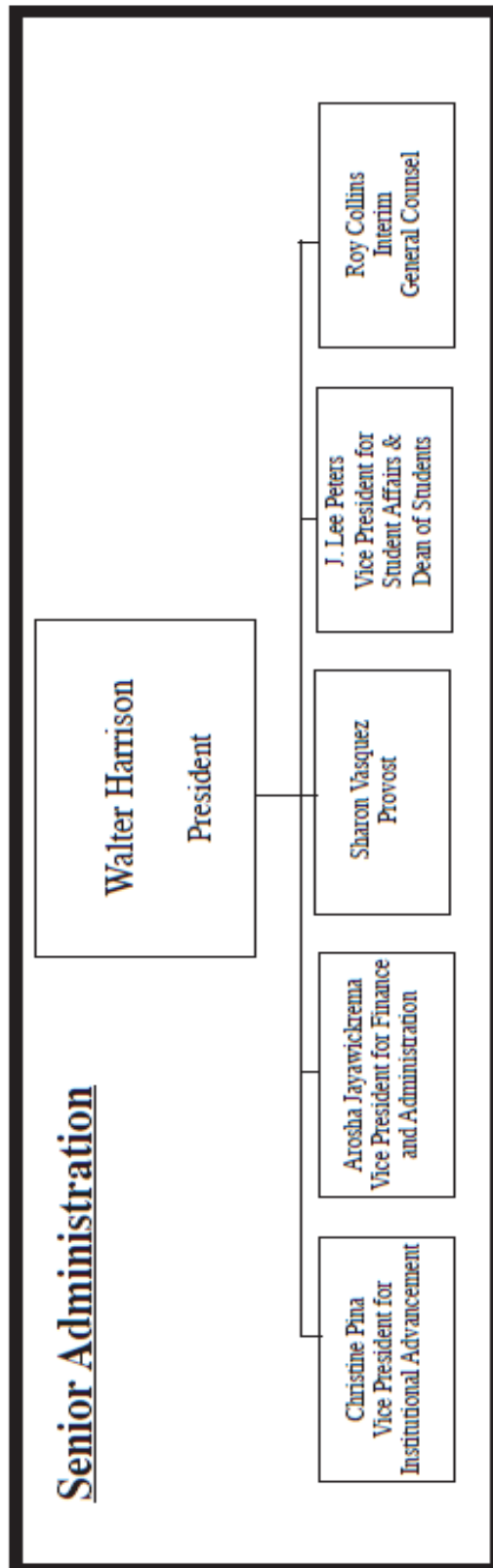
President's Office



June 1, 2016

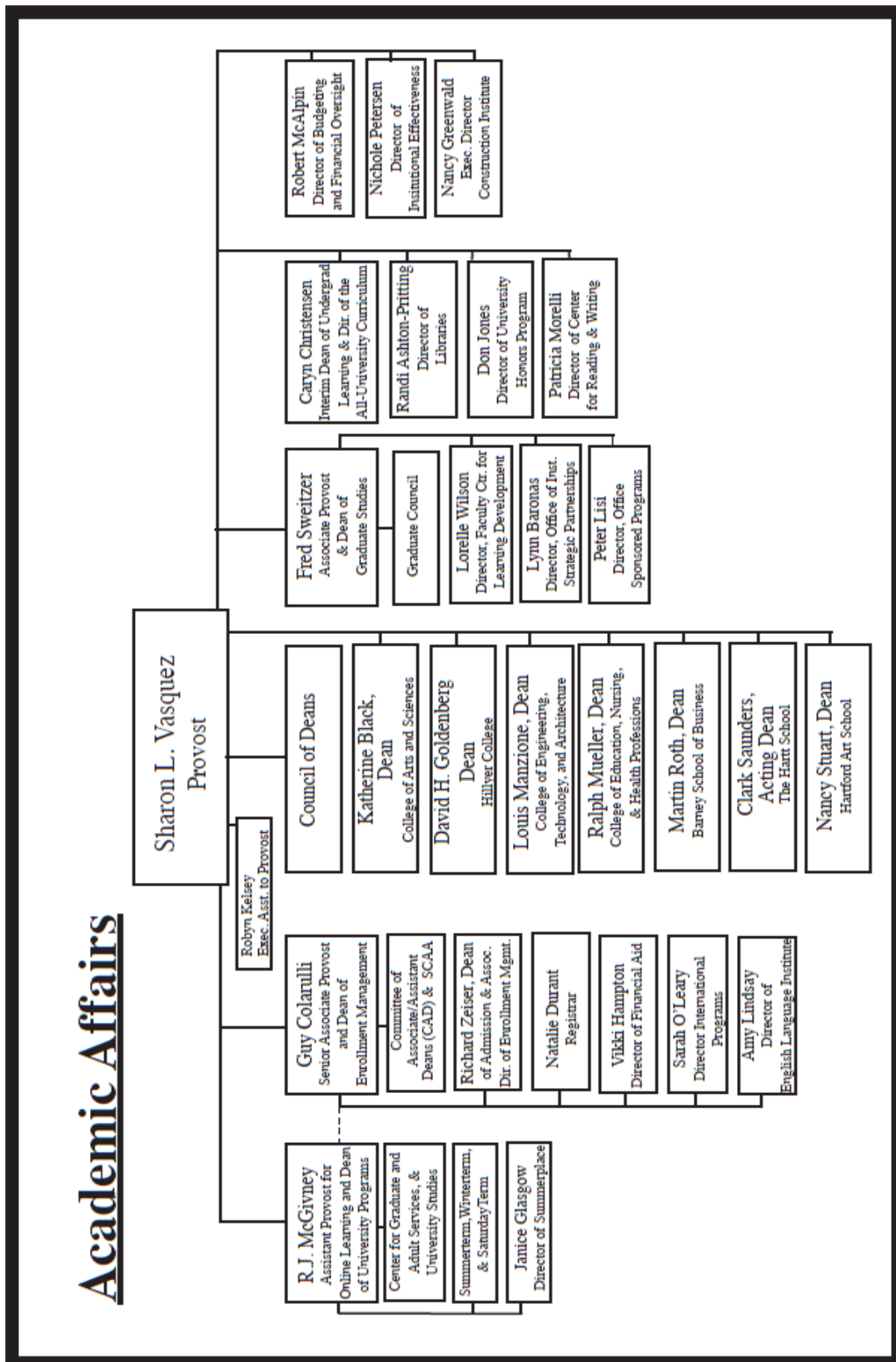
ORGANIZATIONAL CHARTS

Senior Administration



ORGANIZATIONAL CHARTS

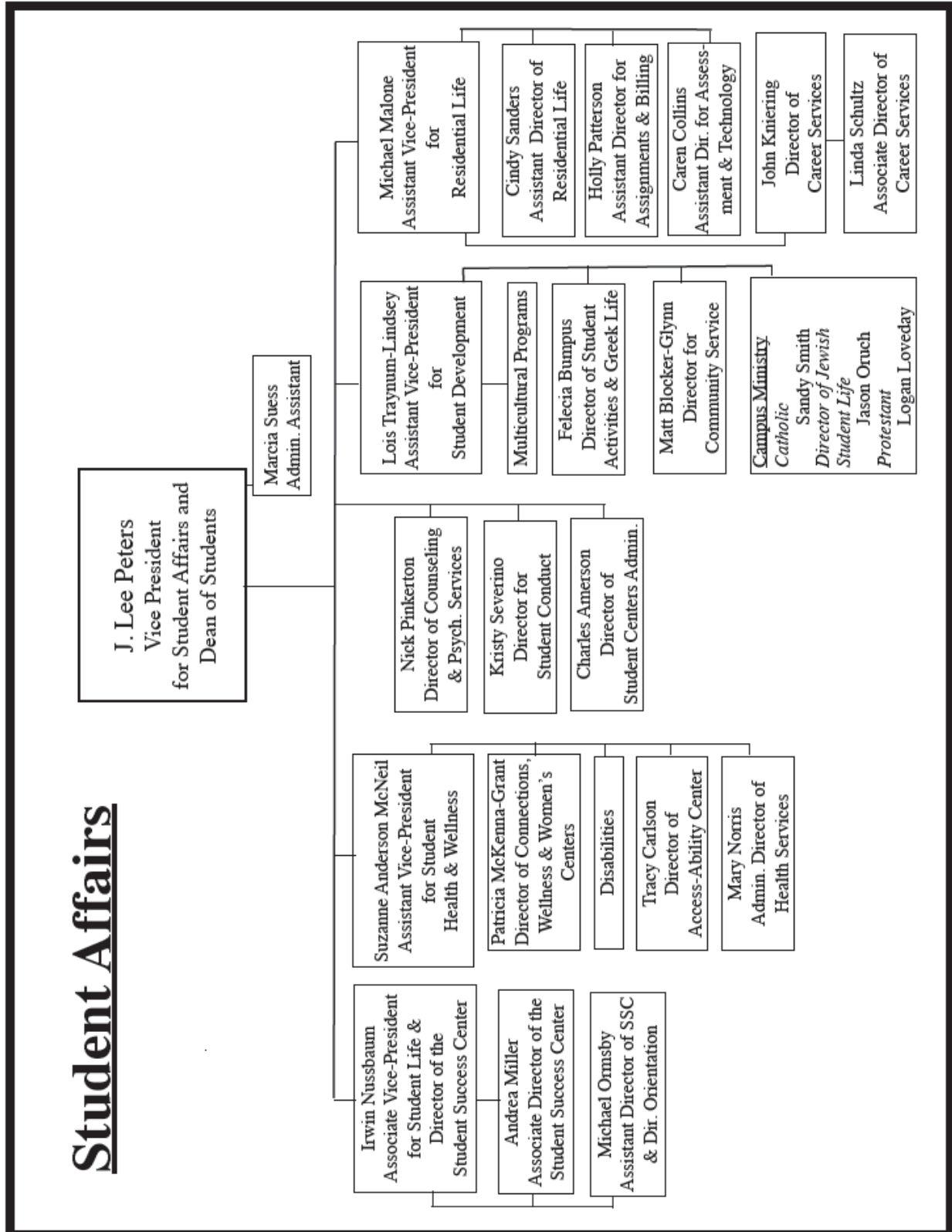
Academic Affairs



June 1, 2016

ORGANIZATIONAL CHARTS

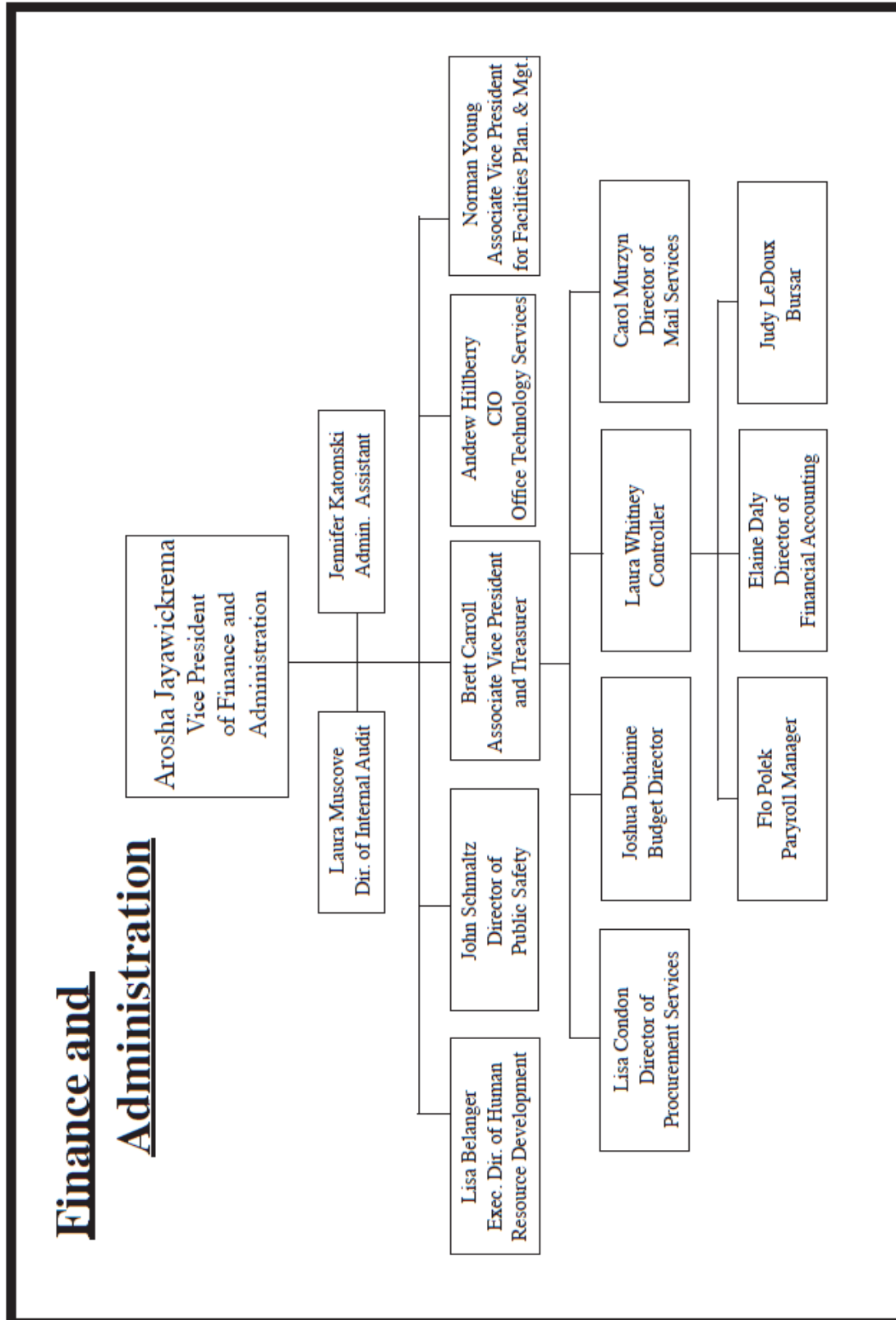
Student Affairs



June 1, 2016

ORGANIZATIONAL CHARTS

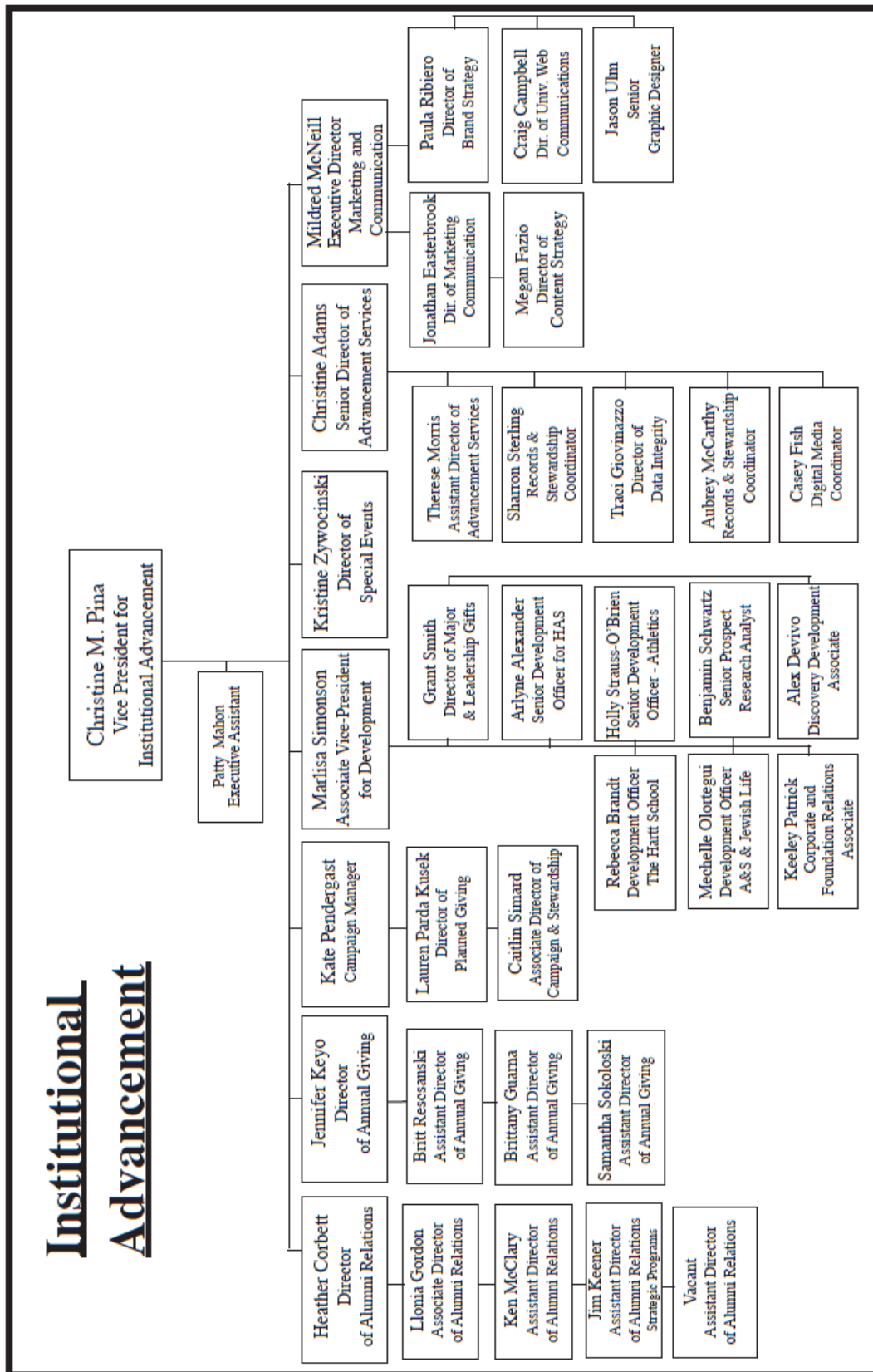
Finance and Administration



June 1, 2016

ORGANIZATIONAL CHARTS

Institutional Advancement



June 1, 2016