

CELEBRATING
100 YEARS
OF THE HARTT SCHOOL:
STORIES AND IMAGES OF THE HARTT
SCHOOL FOUNDING AND HISTORY

THE EMERITI ASSOCIATION
PLENARY MEETING
UNIVERSITY OF HARTFORD
OCTOBER 26, 2021

PROFESSOR DEMARIS HANSEN

THE HARTT SCHOOL, UNIVERSITY OF HARTFORD



ONE HUNDRED YEARS OF HARTT:

A CENTENNIAL CELEBRATION OF THE
HARTT SCHOOL

- Hartford Foundation for Public Giving
- Wesleyan University Press
- Faculty Assistance: Sean Parke, John Nordyke, Steve Metcalf, John Reuter
- Student Assistants: Rachel Rosa, Alex Small



ONE HUNDRED YEARS OF HARTT

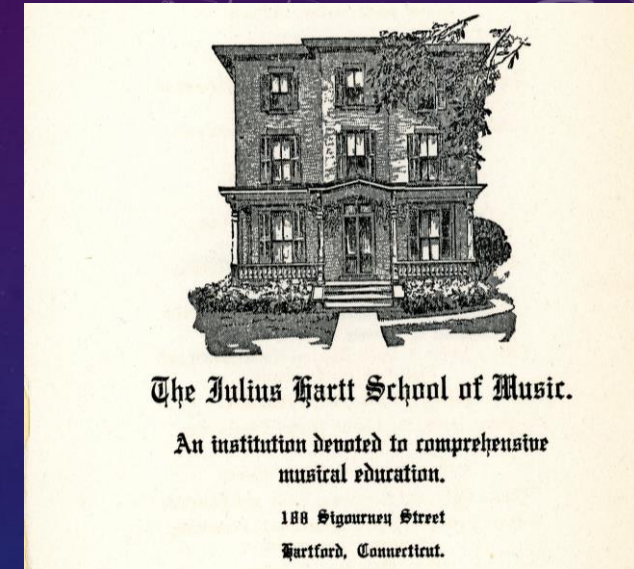
A Centennial Celebration of The Hartt School

DEMARIS HANSEN



ONE HUNDRED YEARS OF HARTT: A CENTENNIAL CELEBRATION

- ❖ How It All Began
- ❖ Researching Hartt's History
- ❖ Who is Julius Hartt?
- ❖ Birth of a Music School
- ❖ The Founders and Friends
- ❖ Depression, War, and Rebirth
- ❖ Contemporary Thinking
- ❖ Passing the Torch--A New Century



HOW IT ALL BEGAN....

THE HARTT CENTENNIAL COMMITTEE:

Linda Blotner * Stephen Gryc *

Patrick Miller * Johanna Morrison *

Dick Provost * Wayne Rivera *

Debra Ryder * Peter Woodard *



CENTENNIAL INITIATIVES

- ❖ Hire Student Assistants
- ❖ Documents and Recordings Preservation
- ❖ Preserve the Elemer Nagy Collection
- ❖ Write A Play
- ❖ Targeted Hartt 100 Performances and Concerts
- ❖ A Centennial Website
- ❖ President's College Lectures and Performances
- ❖ Alumni Interviews
- ❖ Write Centennial Book

UNIVERSITY ARCHIVES

SEAN PARKE

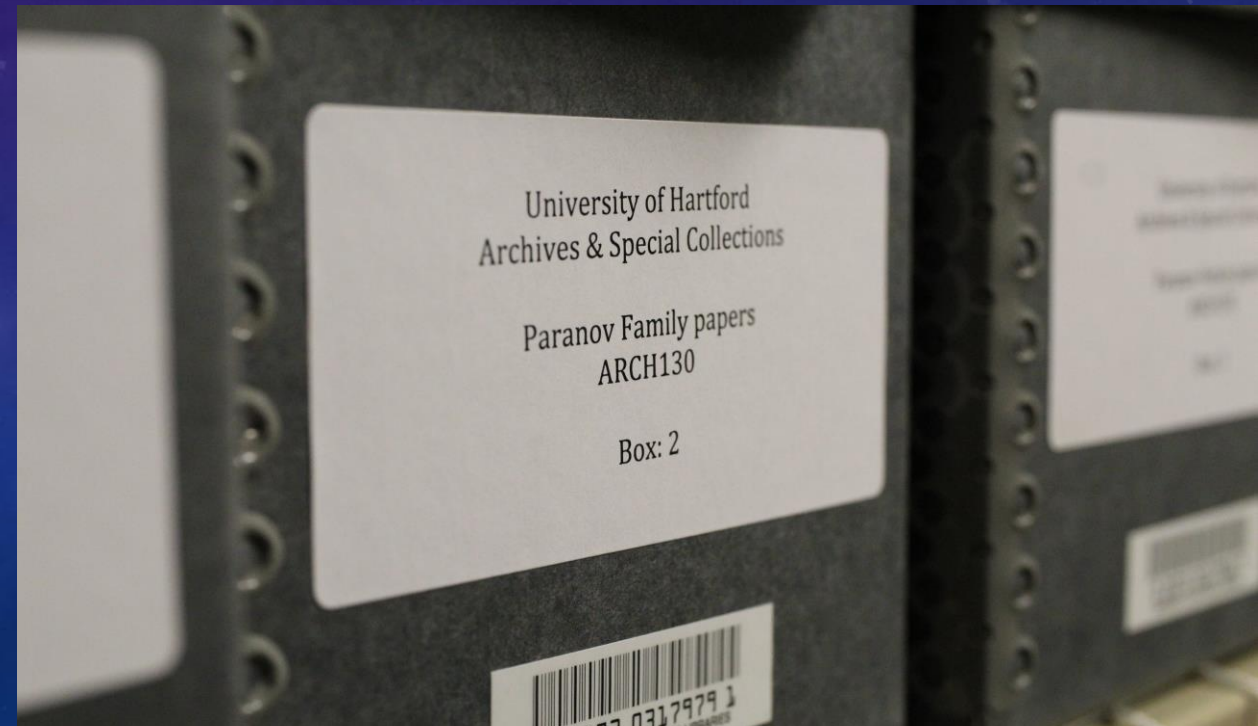
- Maintains records of the university and its schools which document its significant operations, events/activities, and culture.
 - Office of the President Records
 - Student Newspaper Collection
 - Hartford College for Women Collection



RESEARCHING HARTT'S HISTORY

The University Archives

- Personal Collections and Board Reports
- Large Collections, Small collections
- Processing and Digitizing



WHO IS JULIUS HARTT? (1869-1942)

“Hartt was a music educator of uncommon vision and accomplishments...

Julius Hartt was considered an important, even prophetic figure for the future of music in America.”

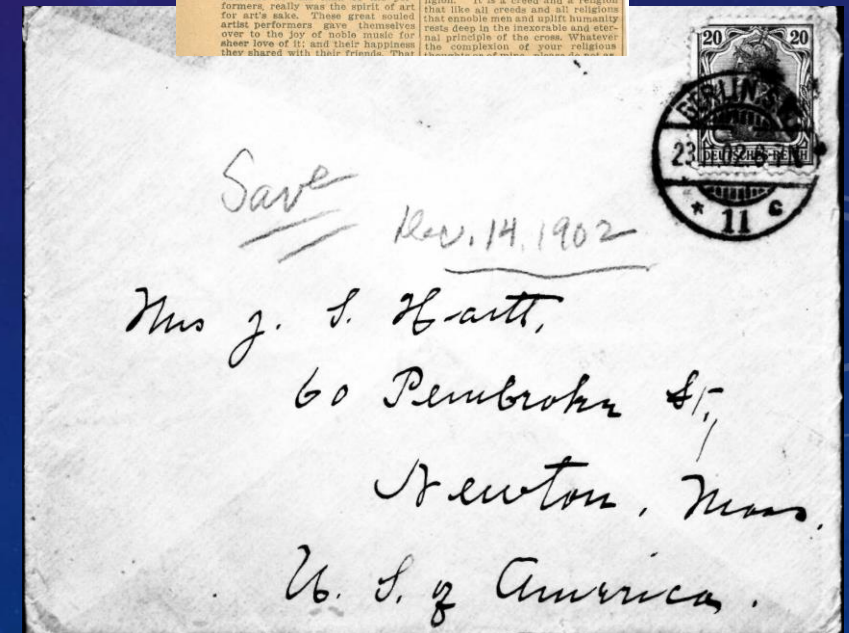
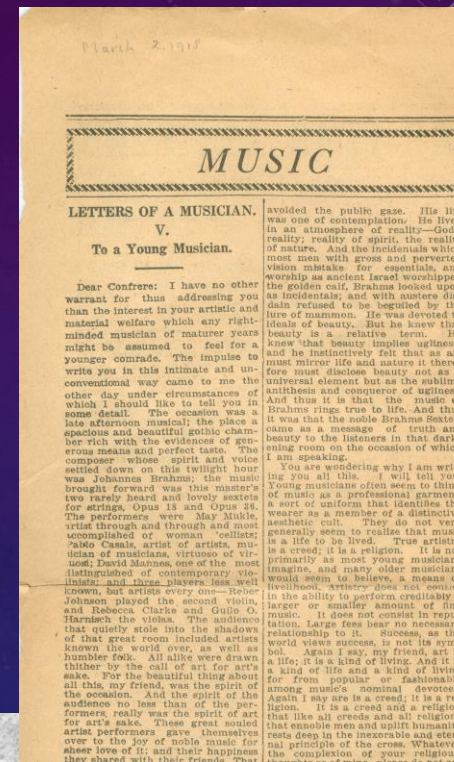
Prof. Myron Schwager (1985)



JULIUS HARTT'S WRITINGS—A GLIMPSE INTO HIS ASTUTE MIND AND PASSION FOR MUSIC

- *Casual Affirmations of a Pianist*
- *Letters of a Musician (1917-1918)*
- *Family Letters*

- **Julius Hartt and Associated Teachers 1919**
- **Julius Hartt School of Music—1920**



THE BIRTH OF A MUSIC SCHOOL

THE JULIUS HARTT SCHOOL OF MUSIC (1920)

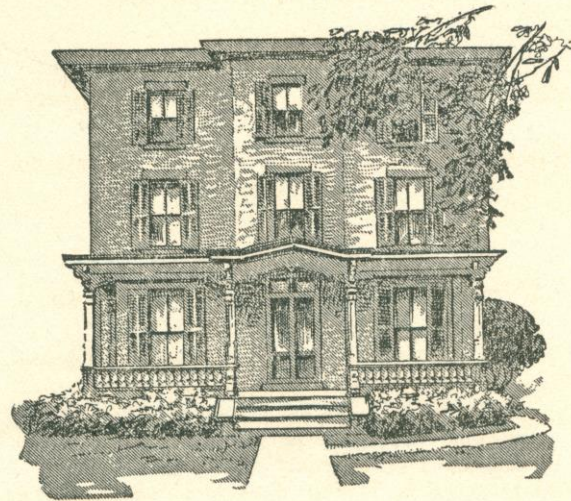
The Founders

Julius Hartt

Pauline Hartt

Morris Perlmutter

Samuel Berkman



The Julius Hartt School of Music.

An institution devoted to comprehensive
musical education.

188 Sigourney Street
Hartford, Connecticut.

The
Julius Hartt
School of Music

1920-1921

THE JULIUS HARTT SCHOOL OF MUSIC

Julius Hartt, Boris Paranov, Directors

Ernest Bloch, Artistic Advisor

Faculty

Nathan H. Allen, Organ, Composition, Theoretical
Subjects

Samuel Berkman, A.B., Pianoforte, Academic
Subjects

Ernest Bloch, Affiliated Teacher.
Higher Composition

(Mrs.) Genevieve Allen Case, Pianoforte,
History of Music

Charles Cheney, Science of Pianoforte Tuning,
Voicing, Regulating and Repairing

(Mme.) Adrienne Remenyi Von Ende and Assist-
ants, Singing.

(Mrs.) Jennie A. Hartt, Musical Kindergarten and
Pianoforte Fundamentals

(Miss) Pauline Hartt, Pianoforte

Julius Hartt, Pianoforte, Higher Composition,
Ensemble

(Mlle.) Marguerite Koch, French

Franz Milcke, and Assistants, Violin and Ensemble

Boris Paranov (Morris Perlmutter), Pianoforte,
Harmony, Counterpoint

(Miss) Elsie Teal, Pianoforte

(Miss) Margaret Warner, B.A., M.A., Modern
Languages

Experienced artist teachers and Assistants,
Ensemble and Orchestral Instruments

1934

THE HARTFORD MUSICAL FOUNDATION, INC.

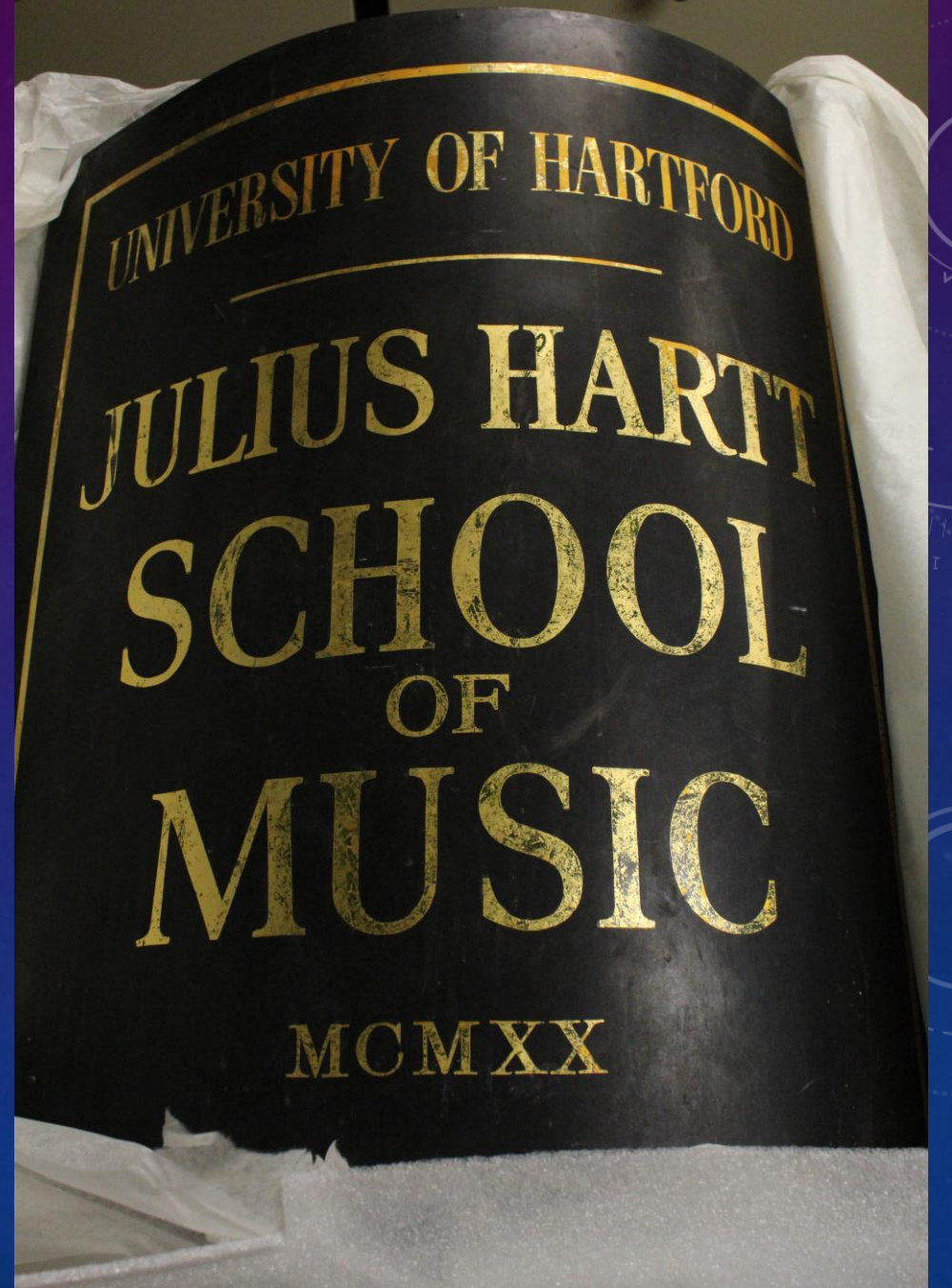


1936

THE JULIUS HARTT SCHOOL OF MUSIC



187 Broad Street—Hartford, CT
Purchased 1938 **



FOUNDERS AND FRIENDS

Morris Perlmutter/Moshe Paranov

- Performances and conducting:
 - Aeolian Hall, NYC Jordan Hall, Boston
 - NY Philharmonic, Hartford Hospital
 - Training School Glee Club, Cecelia Club,
 - Hartford Oratorio Society
 - Hartford Musical Club
 - Opening dedication of the Bushnell -HSO
 - Connecticut Schools-guest conductor
- WTIC Radio 1924
- Hartford Musical Club appearances



PAULINE (DOTTIE) HARTT (1899-1981)

Began teaching piano-1917

University of Hartford Distinguished Service Citation

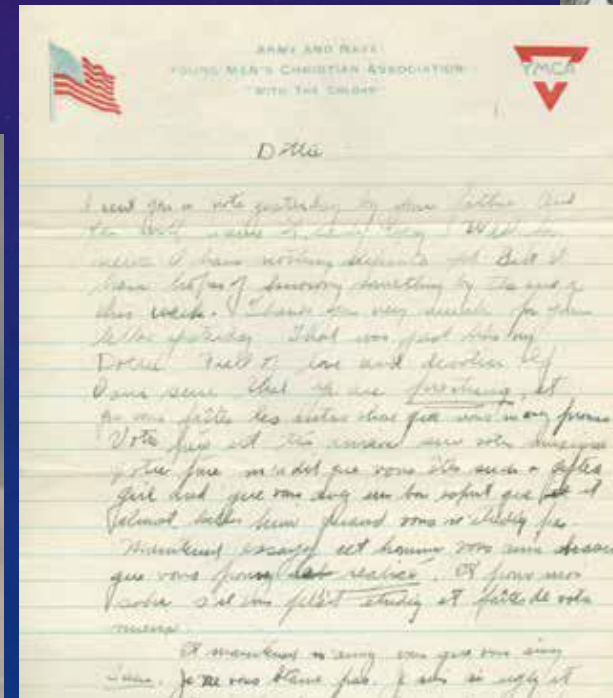
Hartt Dean of Students

Head of Music departments: Fernwood and Kingswood Schools

Hartt Costume Shop seamstress



*Dottie and Moshe
were married in 1924*

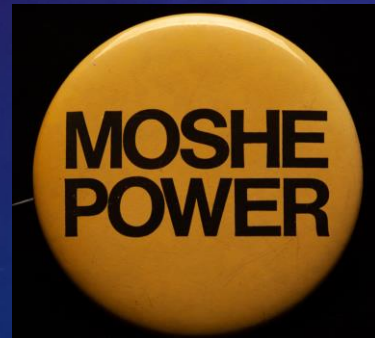


MOSHE PARANOV (1895-1994) AND THE HARTT SCHOOL

Led the school from 1934-1971

President Emeritus to 1994

165 Years of Hartt



SAMUEL BERKMAN (1893-1987)

- Graduate of Hartford High School, Trinity College
- Studied with Julius Hartt
- Significant contributions—NASM
- Member of Trinity Club, Kiwanis Club, Wadsworth, Symphony Society of Greater Hartford
- Taught at St. Joseph College and Kingswood



IRENE KAHN BERKMAN

- 1924 Joined Hartt faculty (piano, theory, opera)
- Taught at St. Joseph's College and UCONN
- Served as production manager for Hartt Opera-Theater
- Famous Duos with Moshe Paranov
- Member of MCH



ELIZABETH WARNER (PARANOV) (1919-2011)

Graduated from Mount Holyoke, BS Julliard, BM, Hartt.

- **Joined faculty in 1942—Registrar, Dean of Hartt College**
- **Served as a church organist around Hartford.**
- **Member of the Hartford Musical Club.**
- **Libby played a key role in the merger of the Hartt School of Music, Hartford Arts School, and Hillyer College to create the University of Hartford in 1957.**
- **The DMA was also initiated under her leadership.**
- **Dean of Students 1966-1983**
- **She retired in 1983 and was appointed dean emerita of The Hartt School**

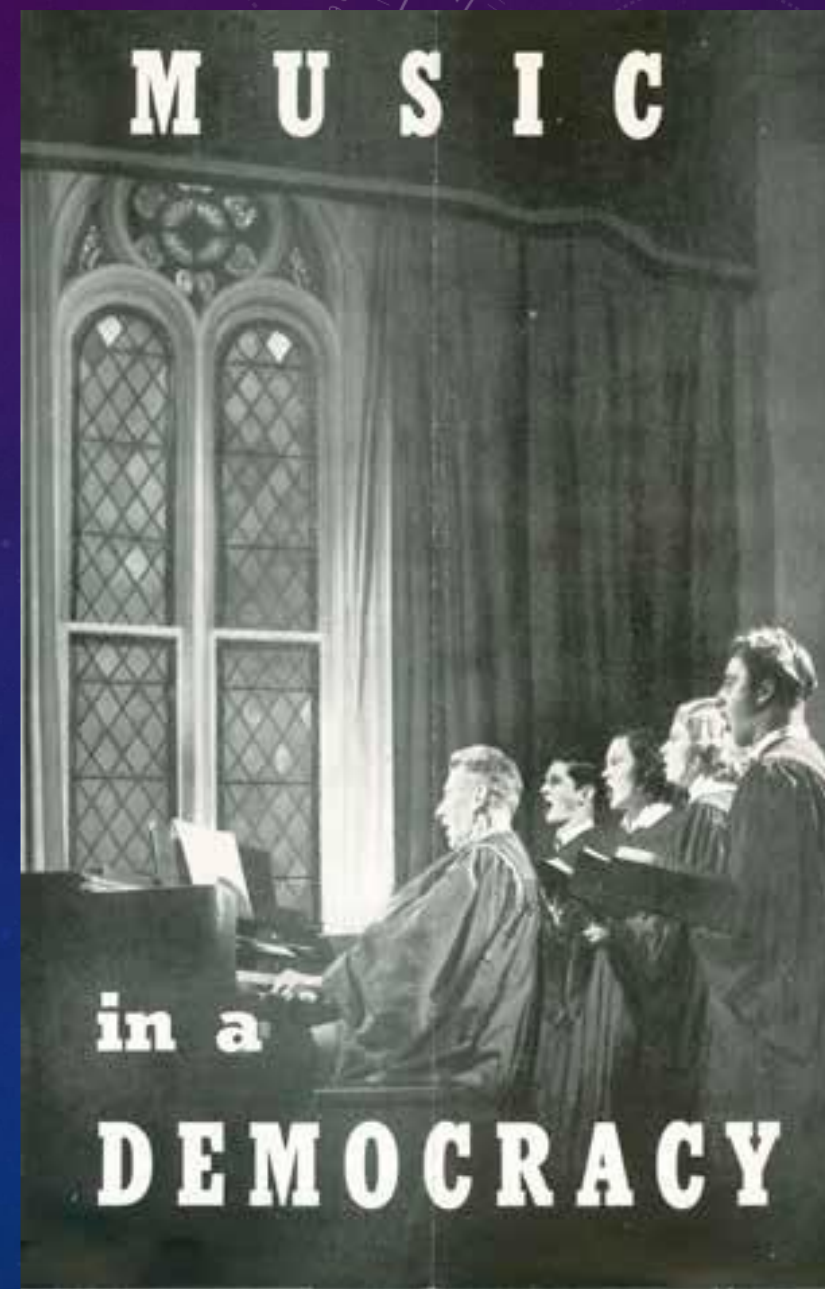


MOSHE AND LIBBY, 1988

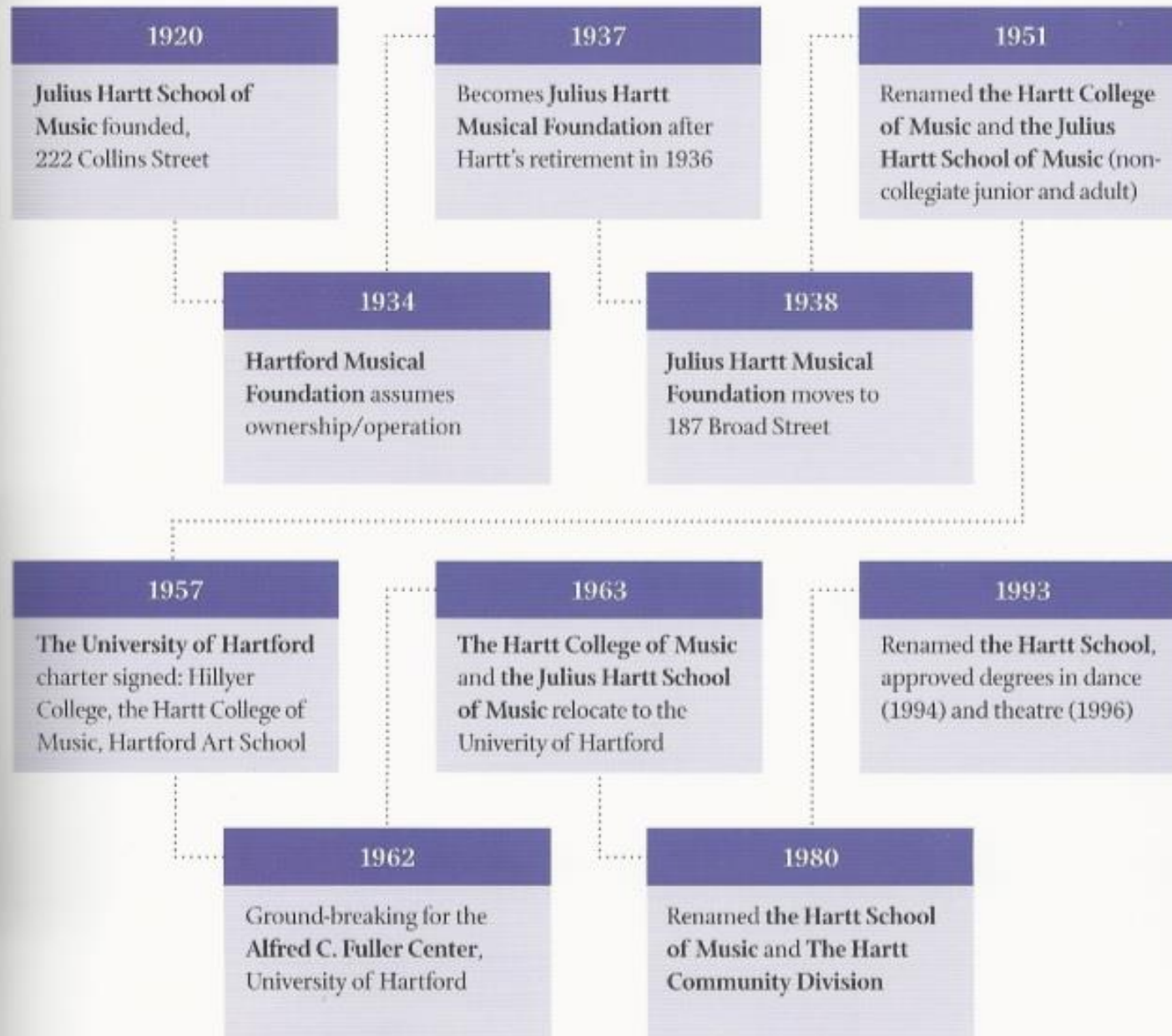


DEPRESSION, WW II, REBIRTH

- Difficult time for the school
- GI Bill



THE HARTT SCHOOL – A VISUAL HISTORY



FORMATION OF THE UNIVERSITY OF HARTFORD

❖ February 21, 1957 CT legislature passed bill that legally established the university signed by Governor Ribicoff

1966 buildings completed:

- ❖ Hartt College of Music
Fuller Building
- ❖ Hillyer College
- ❖ Hartford Art School



**Moshe Paranov (President of Hartt College of Music)
and Alan Wilson (President of Hillyer College) 1956**



Albert Fuller


Mr. & Mrs. Vincent Coffin (1958)





HARTT

The Board of Trustees
of the Julius Hartt Musical Foundation
requests the pleasure of your company
at a concert by
Grant Johannesen, pianist
and
Zara Neisova, violoncellist
with the Hartt Symphony Orchestra
conducted by Moshe Paranov
opening the fiftieth anniversary year of Hartt
and celebrating the
seventy-fifth birthday of Dr. Paranov
on Sunday, October eighteenth
at eight o'clock in Millard Auditorium



Reception following
Black Tie Preferred

R.S.V.P.
by October sixth



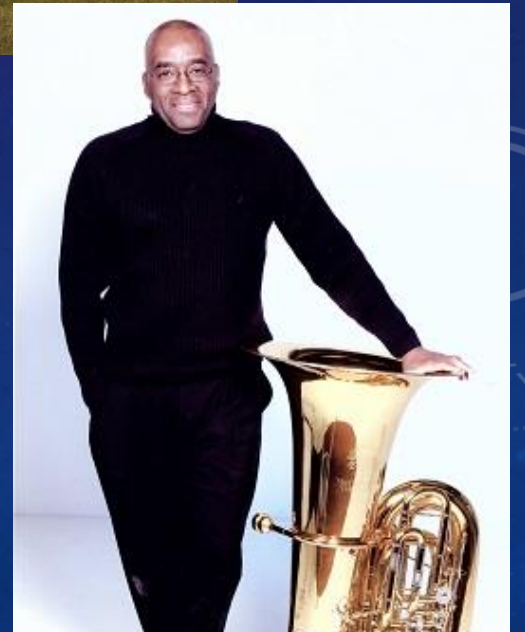
THE HARTT COMMUNITY DIVISION



CONTEMPORARY THINKING

- Libraries
- Academic Studies
- Composition
- Dance
- Jazz
- Music Theatre
- Music Industry--Recording Studios
- Instrumental Studies
- Music Education

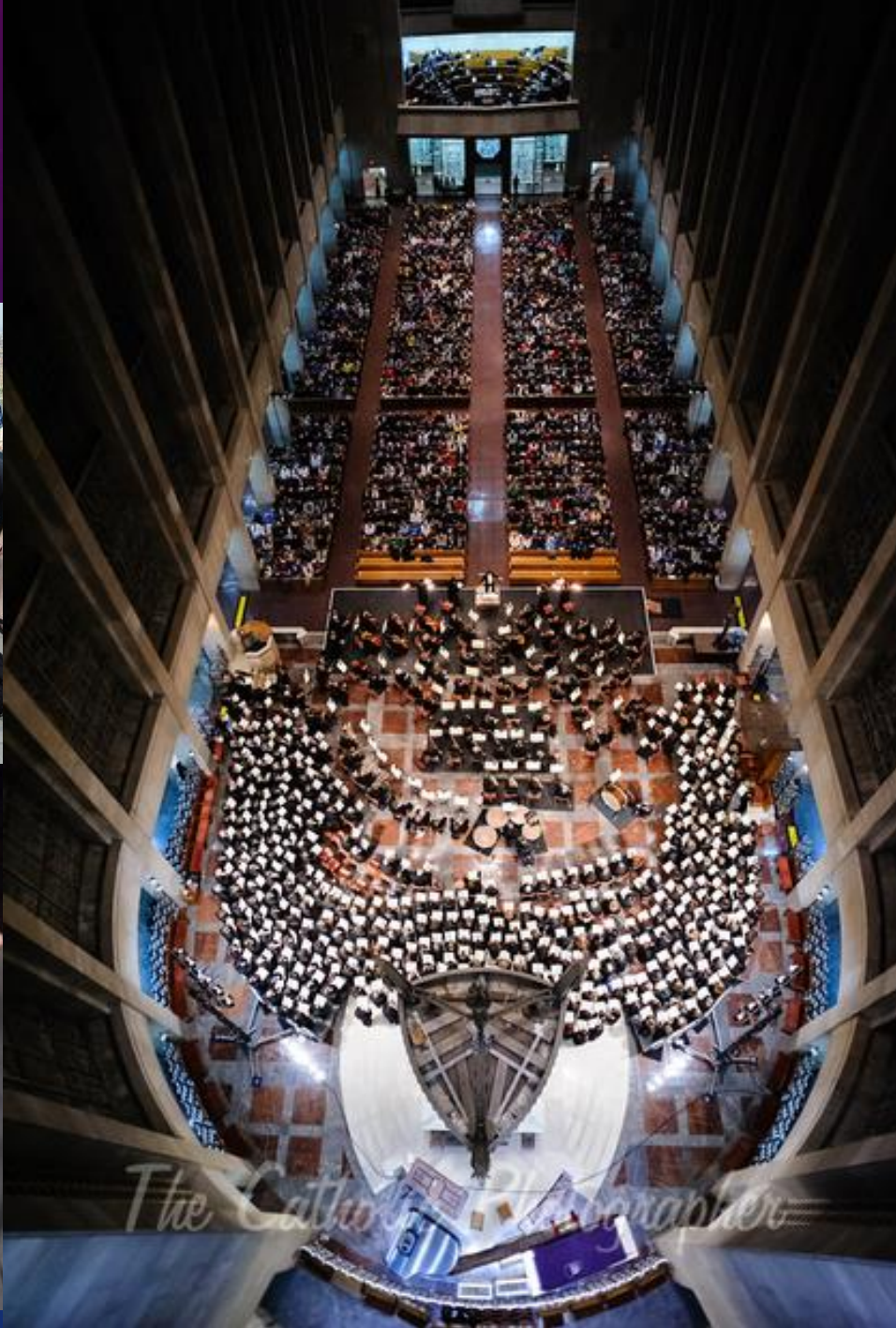
LIBRARIES



ACADEMIC STUDIES



CHORAL AND VOCAL STUDIES



CHORAL AND VOCAL STUDIES

THE JULIUS HARTT MUSICAL FOUNDATION



Presents the

Opera Department Production

Hansel and Gretel

Opera in Three Acts

by ENGELBERT HUMPERDINCK

DECEMBER 14 to 18, 1942

THE MAIN AUDITORIUM

187 BROAD STREET

HARTFORD, CONNECTICUT

Matinees at 3:30

Evenings at 8:30



PICTURE PAGE

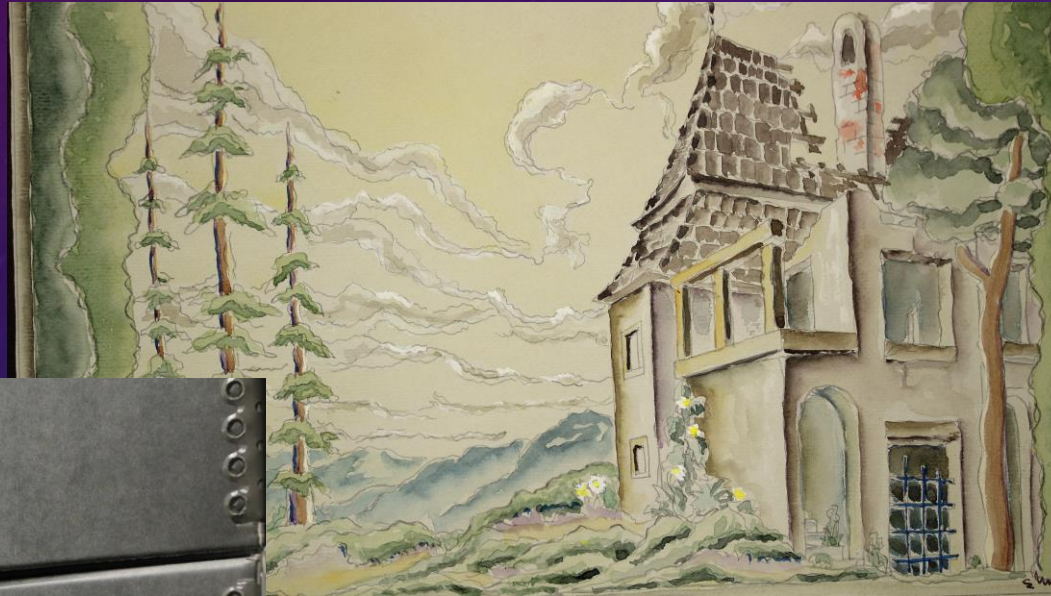
The Opera Department pioneered in experimental television using moving picture techniques. This is its production of Humperdinck's three-act "Hansel and Gretel," the first known television performance of a major opera. (WRGB, Schenectady, N.Y., December 23, 1943.)



Photograph from performance of *Faust*. Elemer Nagy Collection (ARCH125). University of Hartford Archives and Special Collections.

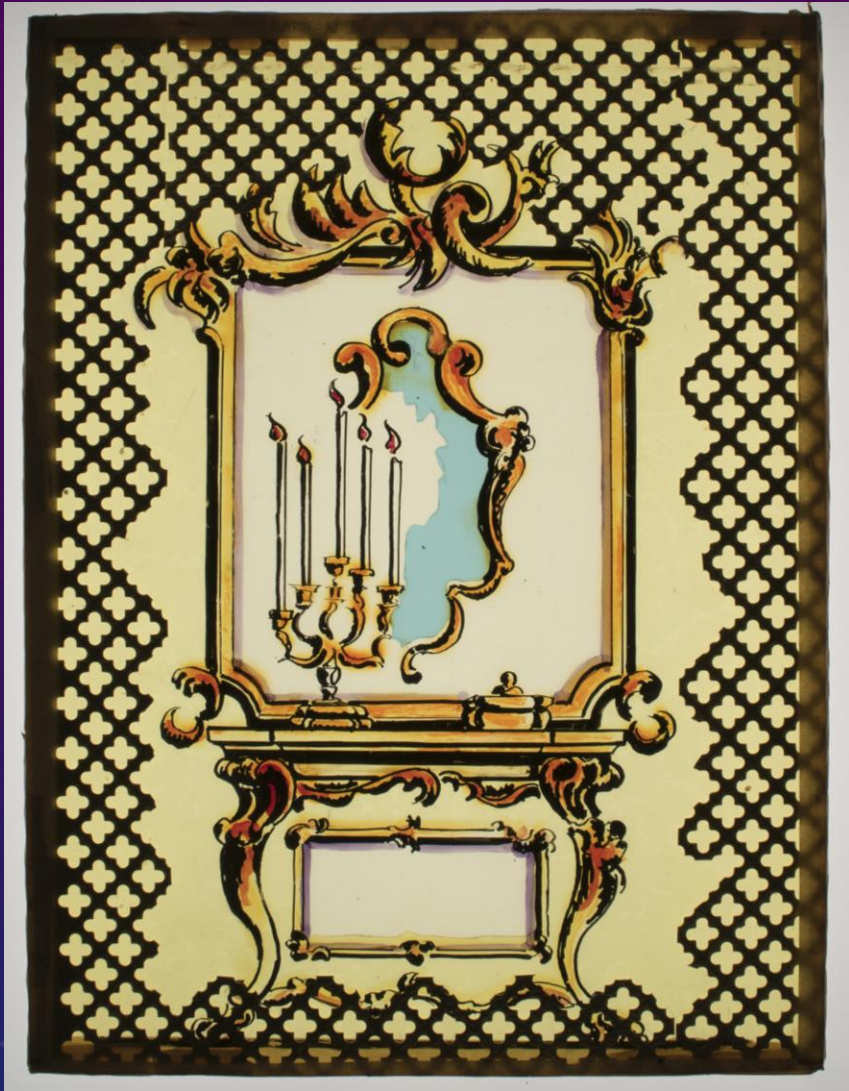
ELEMER NAGY DIGITIZATION

- Elemer Nagy was the director of the Hartt Opera from 1942-1971
- Hundreds of costume and set designs
- Scenery projection slides
- Also, photographs, production notes, publicity materials, and two costumes.



Set design for *Gypsy Baron*, 1957.
Elemer Nagy Collection (ARCH125). University of Hartford Archives and Special Collections.





Left: Scenery projection slide created by Elemer Nagy. Right: Photograph of *The Magic Flute*, 1964, Photographer unknown. Elemer Nagy Collection (ARCH125). University of Hartford Archives and Special Collections.



Elmer 1942.



La Haine

Elmer



Slav. dion
(Bacchus 45)

Elmer

Left: The Witch from *Hansel and Gretel*, 1942; Center and Right: Characters from *Armide*, undated. Elemer Nagy Collection (ARCH125). University of Hartford Archives and Special Collections.

COMPOSITION AND ICAM





DANCE



INSTRUMENTAL STUDIES



Instrumental Studies

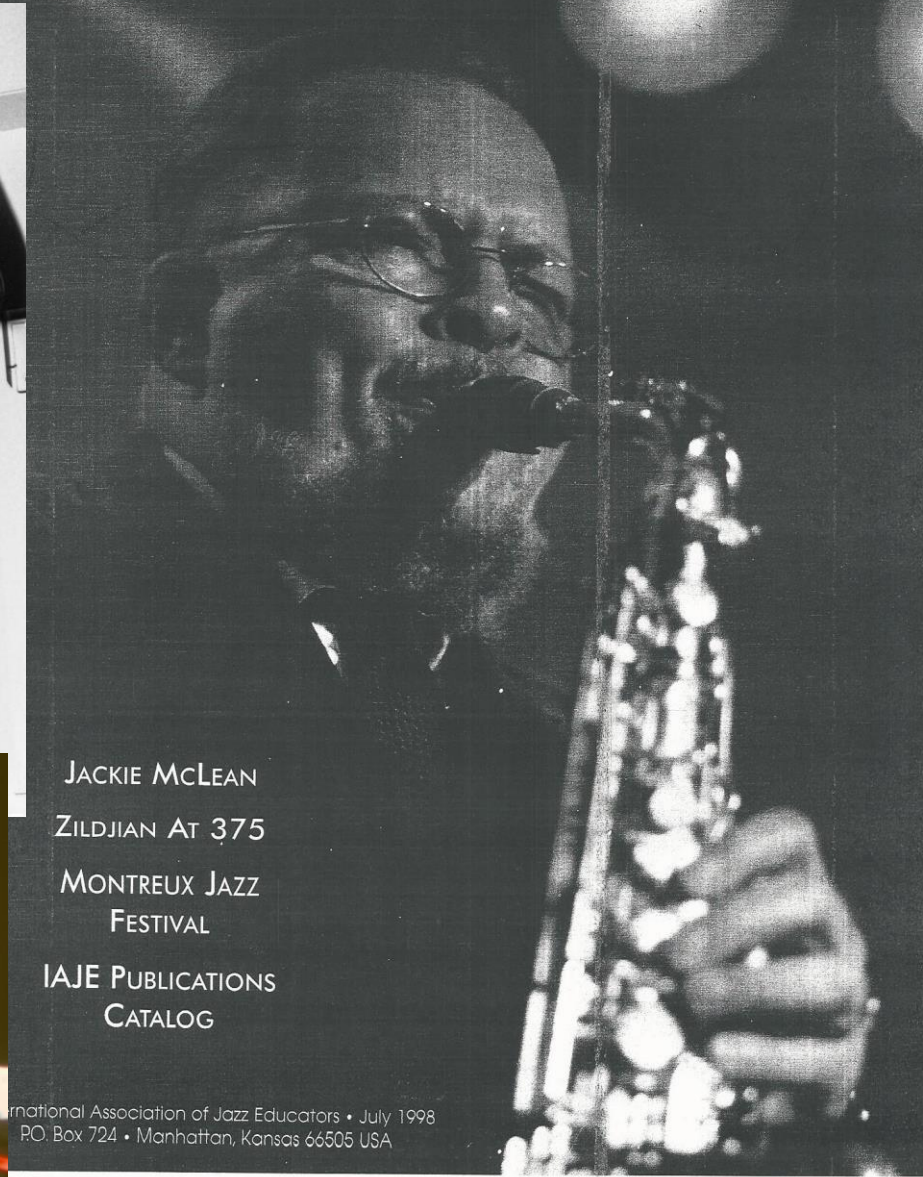


Instrumental Studies



JAZZ

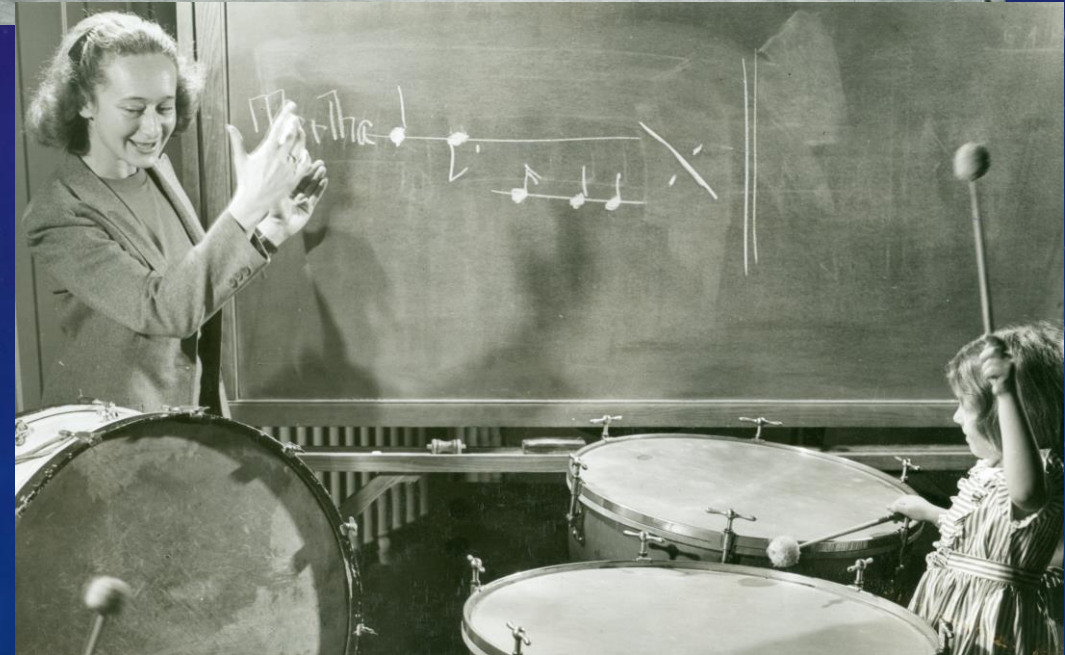
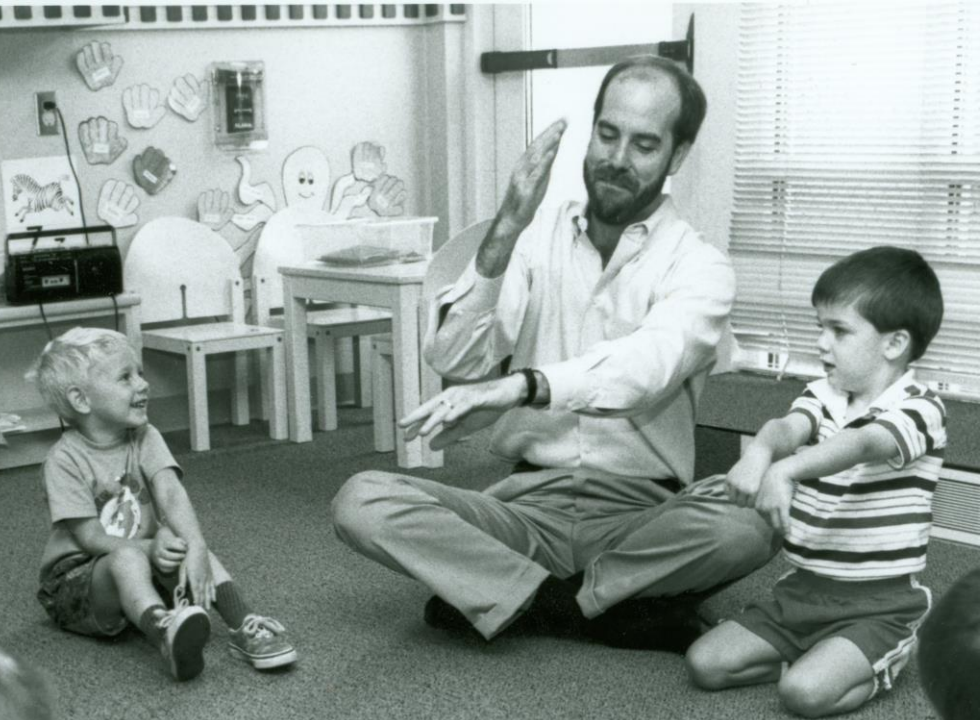
JAZZ EDUCATORS JOURNAL



JACKIE MCLEAN
ZILDJIAN AT 375
MONTREUX JAZZ
FESTIVAL
IAJE PUBLICATIONS
CATALOG

International Association of Jazz Educators • July 1998
PO: Box 724 • Manhattan, Kansas 66505 USA

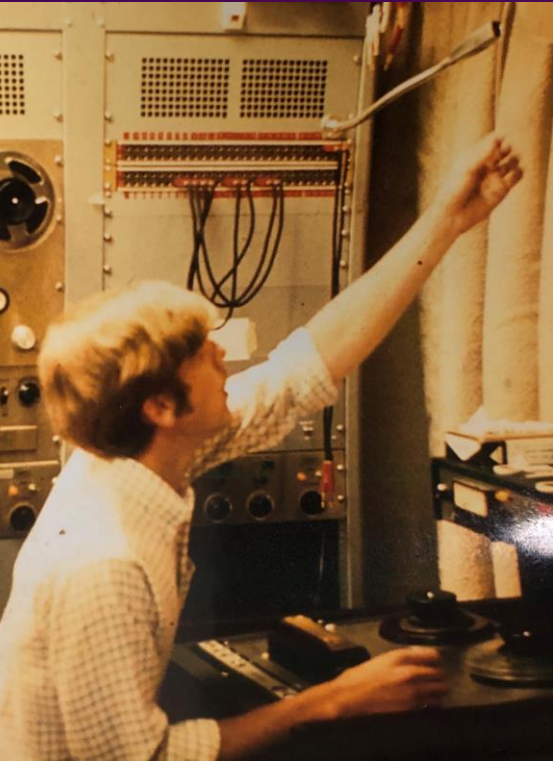
Music Education



PASSING THE TORCH—INTO A NEW CENTURY



CONTEMPORARY STUDIES



Composition

Music Industry

- ❖ Music Production and Technology
- ❖ Music Management
- ❖ Performing Arts Management



THEATRE



THE HARTT SCHOOL

IN THE SERVICE OF THE BEAUTIFUL

